

SRRM4 antibody - middle region
Rabbit Polyclonal Antibody
Catalog # AI14514**Specification**

SRRM4 antibody - middle region - Product Information

Application	WB
Primary Accession	A7MD48
Other Accession	NM_194286 , NP_919262
Reactivity	Human, Mouse, Rat, Rabbit, Horse, Bovine, Guinea Pig, Dog
Predicted	Human, Mouse, Rabbit, Horse, Bovine, Guinea Pig, Dog
Host	Rabbit
Clonality	Polyclonal
Calculated MW	68kDa kDa

SRRM4 antibody - middle region - Additional Information**Gene ID** 84530**Alias Symbol** KIAA1853, MGC176729, MU-MB-2.76, nSR100**Other Names**

Serine/arginine repetitive matrix protein 4, Medulloblastoma antigen MU-MB-2.76, Neural-specific serine/arginine repetitive splicing factor of 100 kDa, Neural-specific SR-related protein of 100 kDa, nSR100, SRRM4, KIAA1853

Format

Liquid. Purified antibody supplied in 1x PBS buffer with 0.09% (w/v) sodium azide and 2% sucrose.

Reconstitution & Storage

Add 50 ul of distilled water. Final anti-SRRM4 antibody concentration is 1 mg/ml in PBS buffer with 2% sucrose. For longer periods of storage, store at 20°C. Avoid repeat freeze-thaw cycles.

Precautions

SRRM4 antibody - middle region is for research use only and not for use in diagnostic or therapeutic procedures.

SRRM4 antibody - middle region - Protein Information**Name** SRRM4**Synonyms** KIAA1853**Function**

Splicing factor specifically required for neural cell differentiation. Acts in conjunction with nPTB/PTBP2 by binding directly to its regulated target transcripts and promotes neural-specific

exon inclusion in many genes that function in neural cell differentiation. Required to promote the inclusion of neural-specific exon 10 in nPTB/PTBP2, leading to increased expression of neural-specific nPTB/PTBP2. Also promotes the inclusion of exon 16 in DAAM1 in neuron extracts (By similarity). Promotes alternative splicing of REST transcripts to produce REST isoform 3 (REST4) with greatly reduced repressive activity, thereby activating expression of REST targets in neural cells (PubMed: <http://www.uniprot.org/citations/30684677> target="_blank">30684677). Plays an important role during embryonic development as well as in the proper functioning of the adult nervous system. Regulates alternative splicing events in genes with important neuronal functions (By similarity).

Cellular Location

Nucleus {ECO:0000250|UniProtKB:Q8BKA3}.

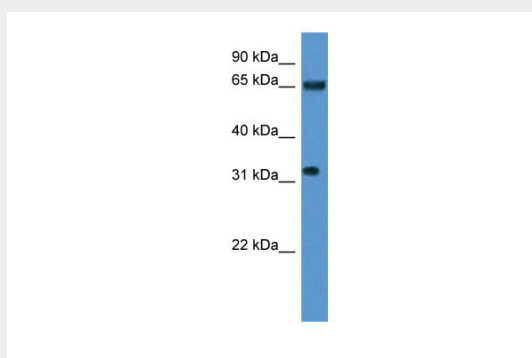
Tissue Location

Specifically expressed in neuronal cells (at protein level). Expressed in the cerebellum

SRRM4 antibody - middle region - Protocols

Provided below are standard protocols that you may find useful for product applications.

- [Western Blot](#)
- [Blocking Peptides](#)
- [Dot Blot](#)
- [Immunohistochemistry](#)
- [Immunofluorescence](#)
- [Immunoprecipitation](#)
- [Flow Cytometry](#)
- [Cell Culture](#)

SRRM4 antibody - middle region - Images

WB Suggested Anti-SRRM4 Antibody Titration: 0.2-1 µg/ml

ELISA Titer: 1:1562500

Positive Control: Human Liver

SRRM4 antibody - middle region - References

- Nagase T., et al. DNA Res. 8:85-95(2001).
Ota T., et al. Nat. Genet. 36:40-45(2004).
Behrends U., et al. Int. J. Cancer 106:244-251(2003).
Calarco J.A., et al. Cell 138:898-910(2009).