

Wibg Antibody - middle region
Rabbit Polyclonal Antibody
Catalog # AI14527**Specification**

Wibg Antibody - middle region - Product Information

| | |
|-------------------|---|
| Application | WB |
| Primary Accession | Q8CHP5 |
| Other Accession | NM_001170869 , NP_001164340 |
| Reactivity | Human, Mouse, Rat, Rabbit, Pig, Horse, Yeast, Bovine, Guinea Pig, Dog |
| Predicted | Human, Mouse, Rat, Rabbit, Pig, Horse, Yeast, Bovine, Guinea Pig, Dog |
| Host | Rabbit |
| Clonality | Polyclonal |
| Calculated MW | 22kDa KDa |

Wibg Antibody - middle region - Additional Information**Gene ID** 78428**Alias Symbol** A030010B05Rik, Pym**Other Names**

Partner of Y14 and mago, Protein wibg homolog, Wibg, Pym

Format

Liquid. Purified antibody supplied in 1x PBS buffer with 0.09% (w/v) sodium azide and 2% sucrose.

Reconstitution & Storage

Add 50 ul of distilled water. Final anti-Wibg antibody concentration is 1 mg/ml in PBS buffer with 2% sucrose. For longer periods of storage, store at 20°C. Avoid repeat freeze-thaw cycles.

Precautions

Wibg Antibody - middle region is for research use only and not for use in diagnostic or therapeutic procedures.

Wibg Antibody - middle region - Protein Information**Name** Pym1 {ECO:0000312|MGI:MGI:1925678}**Synonyms** Pym, Wibg**Function**

Key regulator of the exon junction complex (EJC), a multiprotein complex that associates immediately upstream of the exon-exon junction on mRNAs and serves as a positional landmark for the intron exon structure of genes and directs post-transcriptional processes in the cytoplasm such as mRNA export, nonsense-mediated mRNA decay (NMD) or translation. Acts as an EJC disassembly factor, allowing translation-dependent EJC removal and recycling by disrupting

mature EJC from spliced mRNAs. Its association with the 40S ribosomal subunit probably prevents a translation-independent disassembly of the EJC from spliced mRNAs, by restricting its activity to mRNAs that have been translated. Interferes with NMD and enhances translation of spliced mRNAs, probably by antagonizing EJC functions (By similarity).

Cellular Location

Cytoplasm {ECO:0000250|UniProtKB:Q9BRP8}. Nucleus, nucleolus

{ECO:0000250|UniProtKB:Q9BRP8}. Nucleus, nucleoplasm {ECO:0000250|UniProtKB:Q9BRP8}.

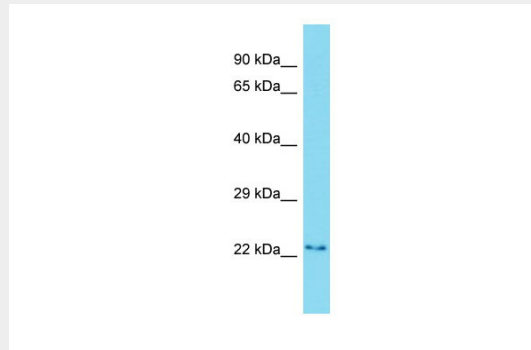
Note=Shuttles between the nucleus and the cytoplasm. Nuclear export is mediated by XPO1/CRM1 {ECO:0000250|UniProtKB:Q9BRP8}

Wibg Antibody - middle region - Protocols

Provided below are standard protocols that you may find useful for product applications.

- [Western Blot](#)
- [Blocking Peptides](#)
- [Dot Blot](#)
- [Immunohistochemistry](#)
- [Immunofluorescence](#)
- [Immunoprecipitation](#)
- [Flow Cytometry](#)
- [Cell Culture](#)

Wibg Antibody - middle region - Images



Host: Rabbit

Target Name: Wibg

Sample Tissue: Mouse Thymus lysates

Antibody Dilution: 1.0µg/ml