

HSH2D antibody - C-terminal region
Rabbit Polyclonal Antibody
Catalog # AI14546**Specification**

HSH2D antibody - C-terminal region - Product Information

Application	WB
Primary Accession	O96JZ2
Other Accession	NM_032855 , NP_116244
Reactivity	Human
Predicted	Human
Host	Rabbit
Clonality	Polyclonal
Calculated MW	39kDa KDa

HSH2D antibody - C-terminal region - Additional Information**Gene ID** 84941**Alias Symbol** **ALX, FLJ14886, HSH2****Other Names**

Hematopoietic SH2 domain-containing protein, Hematopoietic SH2 protein, Adaptor in lymphocytes of unknown function X, HSH2D, ALX

Format

Liquid. Purified antibody supplied in 1x PBS buffer with 0.09% (w/v) sodium azide and 2% sucrose.

Reconstitution & Storage

Add 50 ul of distilled water. Final anti-HSH2D antibody concentration is 1 mg/ml in PBS buffer with 2% sucrose. For longer periods of storage, store at 20°C. Avoid repeat freeze-thaw cycles.

Precautions

HSH2D antibody - C-terminal region is for research use only and not for use in diagnostic or therapeutic procedures.

HSH2D antibody - C-terminal region - Protein Information**Name** HSH2D**Synonyms** ALX**Function**

May be a modulator of the apoptotic response through its ability to affect mitochondrial stability (By similarity). Adapter protein involved in tyrosine kinase and CD28 signaling. Seems to affect CD28-mediated activation of the RE/AP element of the interleukin-2 promoter.

Cellular Location

Cytoplasm. Nucleus.

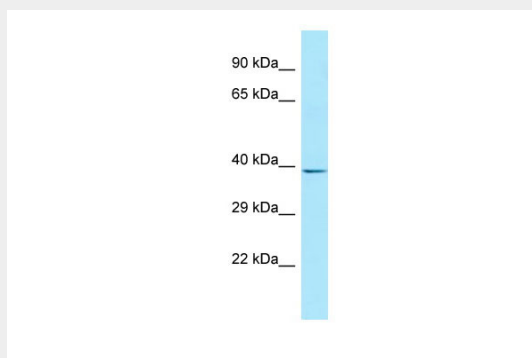
Tissue Location

Predominantly expressed in spleen and hematopoietic cells such as peripheral blood leukocytes and weakly expressed in prostate, thymus, heart, small intestine and placenta

HSH2D antibody - C-terminal region - Protocols

Provided below are standard protocols that you may find useful for product applications.

- [Western Blot](#)
- [Blocking Peptides](#)
- [Dot Blot](#)
- [Immunohistochemistry](#)
- [Immunofluorescence](#)
- [Immunoprecipitation](#)
- [Flow Cytometry](#)
- [Cell Culture](#)

HSH2D antibody - C-terminal region - Images

WB Suggested Anti-HSH2D Antibody Titration: 1.0 µg/ml

Positive Control: COLO205 Whole Cell

HSH2D antibody - C-terminal region - References

- Oda T., et al. Biochem. Biophys. Res. Commun. 288:1078-1086(2001).
Greene T.A., et al. J. Biol. Chem. 278:45128-45134(2003).
Ota T., et al. Nat. Genet. 36:40-45(2004).
Grimwood J., et al. Nature 428:529-535(2004).
Mural R.J., et al. Submitted (JUL-2005) to the EMBL/GenBank/DDBJ databases.