

**HSH2D antibody - C-terminal region**  
**Rabbit Polyclonal Antibody**  
**Catalog # AI14547****Specification**

---

**HSH2D antibody - C-terminal region - Product Information**

Application	WB
Primary Accession	<a href="#">O96JZ2</a>
Other Accession	<a href="#">NM_032855</a> , <a href="#">NP_116244</a>
Reactivity	Human, Horse
Predicted	Human
Host	Rabbit
Clonality	Polyclonal
Calculated MW	39kDa KDa

**HSH2D antibody - C-terminal region - Additional Information****Gene ID** 84941**Alias Symbol** **ALX, FLJ14886, HSH2****Other Names**

Hematopoietic SH2 domain-containing protein, Hematopoietic SH2 protein, Adaptor in lymphocytes of unknown function X, HSH2D, ALX

**Format**

Liquid. Purified antibody supplied in 1x PBS buffer with 0.09% (w/v) sodium azide and 2% sucrose.

**Reconstitution & Storage**

Add 50 ul of distilled water. Final anti-HSH2D antibody concentration is 1 mg/ml in PBS buffer with 2% sucrose. For longer periods of storage, store at 20°C. Avoid repeat freeze-thaw cycles.

**Precautions**

HSH2D antibody - C-terminal region is for research use only and not for use in diagnostic or therapeutic procedures.

**HSH2D antibody - C-terminal region - Protein Information****Name** HSH2D**Synonyms** ALX**Function**

May be a modulator of the apoptotic response through its ability to affect mitochondrial stability (By similarity). Adapter protein involved in tyrosine kinase and CD28 signaling. Seems to affect CD28-mediated activation of the RE/AP element of the interleukin-2 promoter.

**Cellular Location**

Cytoplasm. Nucleus.

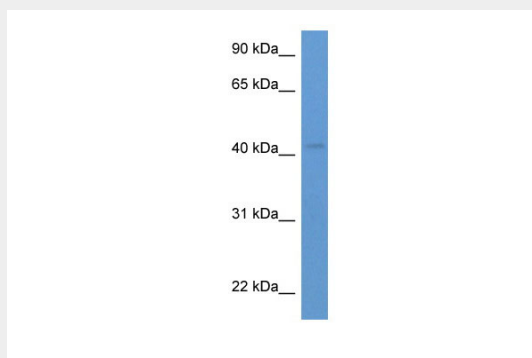
**Tissue Location**

Predominantly expressed in spleen and hematopoietic cells such as peripheral blood leukocytes and weakly expressed in prostate, thymus, heart, small intestine and placenta

**HSH2D antibody - C-terminal region - Protocols**

Provided below are standard protocols that you may find useful for product applications.

- [Western Blot](#)
- [Blocking Peptides](#)
- [Dot Blot](#)
- [Immunohistochemistry](#)
- [Immunofluorescence](#)
- [Immunoprecipitation](#)
- [Flow Cytometry](#)
- [Cell Culture](#)

**HSH2D antibody - C-terminal region - Images**

WB Suggested Anti-HSH2D Antibody Titration: 0.2-1 µg/ml

ELISA Titer: 1:62500

Positive Control: Human kidney

**HSH2D antibody - C-terminal region - References**

Oda T., et al. Biochem. Biophys. Res. Commun. 288:1078-1086(2001).  
Greene T.A., et al. J. Biol. Chem. 278:45128-45134(2003).  
Ota T., et al. Nat. Genet. 36:40-45(2004).  
Grimwood J., et al. Nature 428:529-535(2004).  
Mural R.J., et al. Submitted (JUL-2005) to the EMBL/GenBank/DDBJ databases.