

WDR73 antibody - middle region
Rabbit Polyclonal Antibody
Catalog # AI14548**Specification**

WDR73 antibody - middle region - Product Information

Application	WB
Primary Accession	Q6P4I2
Other Accession	NM_032856 , NP_116245
Reactivity	Human, Rabbit, Horse, Dog
Predicted	Human, Dog
Host	Rabbit
Clonality	Polyclonal
Calculated MW	42kDa KDa

WDR73 antibody - middle region - Additional Information**Gene ID** 84942**Alias Symbol** **FLJ14888, HSPC264****Other Names**

WD repeat-containing protein 73, WDR73

Format

Liquid. Purified antibody supplied in 1x PBS buffer with 0.09% (w/v) sodium azide and 2% sucrose.

Reconstitution & Storage

Add 50 ul of distilled water. Final anti-WDR73 antibody concentration is 1 mg/ml in PBS buffer with 2% sucrose. For longer periods of storage, store at 20°C. Avoid repeat freeze-thaw cycles.

Precautions

WDR73 antibody - middle region is for research use only and not for use in diagnostic or therapeutic procedures.

WDR73 antibody - middle region - Protein Information**Name** WDR73**Function**

May play a role in the regulation of microtubule organization and dynamics (PubMed:25466283).

Cellular Location

Cytoplasm, cytosol. Cytoplasm, cytoskeleton, spindle. Cytoplasm, cytoskeleton, spindle pole. Cleavage furrow. Note=During interphase, located in the cytosol. During mitosis, accumulates at the spindle poles and microtubule asters and later in the cleavage furrow

Tissue Location

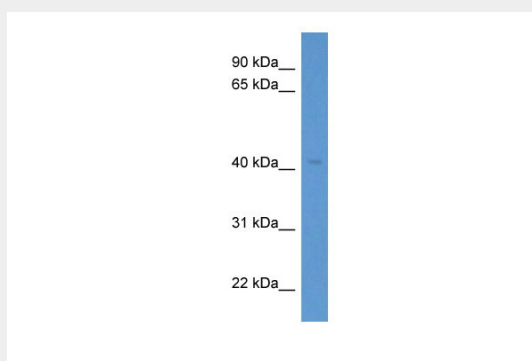
Expressed in kidney and brain. In the kidney, expressed in glomeruli, most probably in podocytes, and in tubules (at protein level). In the brain, expressed in the cerebellum, with high levels in Purkinje cells and their projecting axons, in the deep cerebellar nuclei and in pyramidal neurons of the cerebral cortex (at protein level). In the white matter, mainly present in astrocytes, but not in oligodendrocytes (at protein level). Also highly expressed in endothelial cells of cerebral capillaries (at protein level)

WDR73 antibody - middle region - Protocols

Provided below are standard protocols that you may find useful for product applications.

- [Western Blot](#)
- [Blocking Peptides](#)
- [Dot Blot](#)
- [Immunohistochemistry](#)
- [Immunofluorescence](#)
- [Immunoprecipitation](#)
- [Flow Cytometry](#)
- [Cell Culture](#)

WDR73 antibody - middle region - Images



WB Suggested Anti-WDR73 Antibody Titration: 0.2-1 µg/ml
ELISA Titer: 1:62500
Positive Control: Human Liver

WDR73 antibody - middle region - References

Zhang Q.-H., et al. Genome Res. 10:1546-1560(2000).
Ota T., et al. Nat. Genet. 36:40-45(2004).
Burkard T.R., et al. BMC Syst. Biol. 5:17-17(2011).