

**IL21 Antibody - C-terminal region**  
**Rabbit Polyclonal Antibody**  
**Catalog # AI14555****Specification**

---

**IL21 Antibody - C-terminal region - Product Information**

Application	WB
Primary Accession	<a href="#">Q9HBE4</a>
Other Accession	<a href="#">NM_001207006</a> , <a href="#">NP_001193935</a>
Reactivity	Human, Pig, Goat, Sheep, Horse, Bovine, Dog
Predicted	Human, Pig, Goat, Sheep, Horse, Bovine, Dog
Host	Rabbit
Clonality	Polyclonal
Calculated MW	16kDa kDa

**IL21 Antibody - C-terminal region - Additional Information****Gene ID** 59067

Alias Symbol	IL-21, Za11
<b>Other Names</b>	
Interleukin-21, IL-21, Za11, IL21	

**Format**

Liquid. Purified antibody supplied in 1x PBS buffer with 0.09% (w/v) sodium azide and 2% sucrose.

**Reconstitution & Storage**

Add 50 ul of distilled water. Final anti-IL21 antibody concentration is 1 mg/ml in PBS buffer with 2% sucrose. For longer periods of storage, store at 20°C. Avoid repeat freeze-thaw cycles.

**Precautions**

IL21 Antibody - C-terminal region is for research use only and not for use in diagnostic or therapeutic procedures.

**IL21 Antibody - C-terminal region - Protein Information****Name** IL21 ([HGNC:6005](#))**Function**

Cytokine with immunoregulatory activity. May promote the transition between innate and adaptive immunity. Induces the production of IgG(1) and IgG(3) in B-cells (By similarity). Implicated in the generation and maintenance of T follicular helper (Tfh) cells and the formation of germinal-centers. Together with IL6, control the early generation of Tfh cells and are critical for an effective antibody response to acute viral infection (By similarity). May play a role in proliferation and maturation of natural killer (NK) cells in synergy with IL15. May regulate proliferation of mature B- and T-cells in response to activating stimuli. In synergy with IL15 and IL18 stimulates

interferon gamma production in T-cells and NK cells (PubMed:<a href="http://www.uniprot.org/citations/11081504" target="\_blank">11081504</a>, PubMed:<a href="http://www.uniprot.org/citations/15178704" target="\_blank">15178704</a>). During T-cell mediated immune response may inhibit dendritic cells (DC) activation and maturation (By similarity).

**Cellular Location**

Secreted.

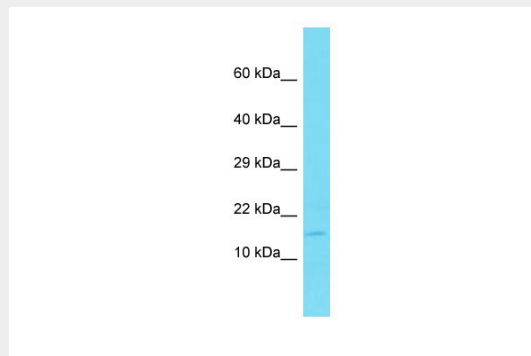
**Tissue Location**

Expressed in activated CD4-positive T-cells but not in CD8-positive T-cells, B-cells, or monocytes

**IL21 Antibody - C-terminal region - Protocols**

Provided below are standard protocols that you may find useful for product applications.

- [Western Blot](#)
- [Blocking Peptides](#)
- [Dot Blot](#)
- [Immunohistochemistry](#)
- [Immunofluorescence](#)
- [Immunoprecipitation](#)
- [Flow Cytometry](#)
- [Cell Culture](#)

**IL21 Antibody - C-terminal region - Images**

Host: Rabbit  
Target Name: IL21  
Sample Tissue: Fetal Liver lysates  
Antibody Dilution: 1.0µg/ml