

AKR1D1 antibody - middle region
Rabbit Polyclonal Antibody
Catalog # AI14572**Specification**

AKR1D1 antibody - middle region - Product Information

Application	WB
Primary Accession	P51857
Other Accession	NM_005989 , NP_005980
Reactivity	Human, Mouse, Rat, Rabbit, Pig, Horse, Bovine, Dog
Predicted Host	Human, Mouse, Rat, Chicken, Bovine, Dog
Clonality	Rabbit
Calculated MW	Polyclonal 37kDa KDa

AKR1D1 antibody - middle region - Additional Information**Gene ID** 6718**Alias Symbol** **3o5bred, CBAS2, SRD5B1****Other Names**

3-oxo-5-beta-steroid 4-dehydrogenase, 1.3.1.3, Aldo-keto reductase family 1 member D1, Delta(4)-3-ketosteroid 5-beta-reductase, Delta(4)-3-oxosteroid 5-beta-reductase, AKR1D1, SRD5B1

Format

Liquid. Purified antibody supplied in 1x PBS buffer with 0.09% (w/v) sodium azide and 2% sucrose.

Reconstitution & Storage

Add 50 ul of distilled water. Final anti-AKR1D1 antibody concentration is 1 mg/ml in PBS buffer with 2% sucrose. For longer periods of storage, store at 20°C. Avoid repeat freeze-thaw cycles.

Precautions

AKR1D1 antibody - middle region is for research use only and not for use in diagnostic or therapeutic procedures.

AKR1D1 antibody - middle region - Protein Information**Name** AKR1D1**Synonyms** SRD5B1**Function**

Catalyzes the stereospecific NADPH-dependent reduction of the C4-C5 double bond of bile acid intermediates and steroid hormones carrying a delta(4)-3-one structure to yield an A/B cis-ring junction. This cis-configuration is crucial for bile acid biosynthesis and plays important roles in steroid metabolism. Capable of reducing a broad range of delta-(4)-3-ketosteroids from C18 (such as, 17beta-hydroxyestr-4-en-3-one) to C27 (such as, 7alpha-hydroxycholest-4-en-3-one).

Cellular Location

Cytoplasm.

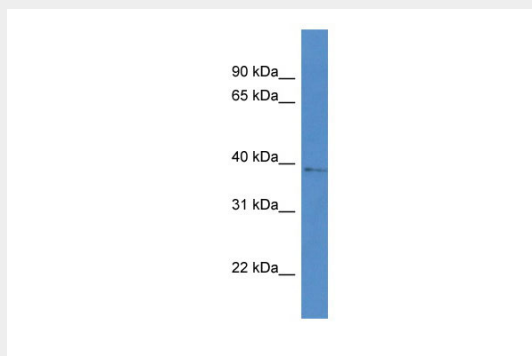
Tissue Location

Highly expressed in liver. Expressed in testis and weakly in colon.

AKR1D1 antibody - middle region - Protocols

Provided below are standard protocols that you may find useful for product applications.

- [Western Blot](#)
- [Blocking Peptides](#)
- [Dot Blot](#)
- [Immunohistochemistry](#)
- [Immunofluorescence](#)
- [Immunoprecipitation](#)
- [Flow Cytometry](#)
- [Cell Culture](#)

AKR1D1 antibody - middle region - Images

WB Suggested Anti-AKR1D1 Antibody Titration: 1.0 µg/ml

Positive Control: RPMI-8226 Whole Cell

AKR1D1 antibody - middle region - References

- Kondo K.-H., et al. Eur. J. Biochem. 219:357-363(1994).
Charbonneau A., et al. Biochim. Biophys. Acta 1517:228-235(2001).
Ota T., et al. Nat. Genet. 36:40-45(2004).
Hillier L.W., et al. Nature 424:157-164(2003).
Scherer S.W., et al. Science 300:767-772(2003).