

FCRL5 Antibody - C-terminal region
Rabbit Polyclonal Antibody
Catalog # AI14582**Specification**

FCRL5 Antibody - C-terminal region - Product Information

Application	WB
Primary Accession	O96RD9
Other Accession	NM_031281 , NP_112571
Reactivity	Human
Predicted	Human
Host	Rabbit
Clonality	Polyclonal
Calculated MW	106kDa KDa

FCRL5 Antibody - C-terminal region - Additional Information**Gene ID** 83416

Alias Symbol BXMAS1, CD307, DKFZp667E2019, DKFZp667F216, FCRH5, FLJ00333, FLJ00397, IRTA2, MGC119590, MGC119592, MGC119593, PRO820

Other Names

Fc receptor-like protein 5, FcR-like protein 5, FcRL5, BXMAS1, Fc receptor homolog 5, FcRH5, Immune receptor translocation-associated protein 2, CD307e, FCRL5, FCRH5, IRTA2

Format

Liquid. Purified antibody supplied in 1x PBS buffer with 0.09% (w/v) sodium azide and 2% sucrose.

Reconstitution & Storage

Add 50 ul of distilled water. Final anti-FCRL5 antibody concentration is 1 mg/ml in PBS buffer with 2% sucrose. For longer periods of storage, store at 20°C. Avoid repeat freeze-thaw cycles.

Precautions

FCRL5 Antibody - C-terminal region is for research use only and not for use in diagnostic or therapeutic procedures.

FCRL5 Antibody - C-terminal region - Protein Information**Name** FCRL5**Synonyms** FCRH5, IRTA2**Function**

Plays an important role in B-cell response to antigen that acts both as a negative or positive coreceptor. Inhibits B-cell receptor (BCR) signaling in the absence of CR2 stimulation but engagement with CR2 and the BCR lead to a superior calcium response compared to CR2 and BCR

costimulation (PubMed:30107486). May be involved in B-cell development and differentiation in peripheral lymphoid organs and may be useful markers of B-cell stages. May have an immunoregulatory role in marginal zone B-cells. May play a role in fertilization (By similarity).

Cellular Location

Cell membrane; Single-pass type I membrane protein

Tissue Location

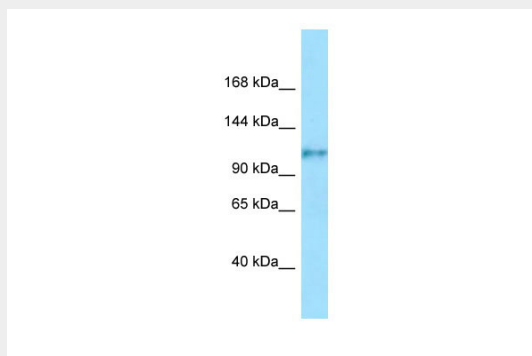
Expressed in marginal zone B-cells, immunoblasts, tonsillar germinal center centrocytes and in the intraepithelial and interfollicular regions of the tonsil. Expressed in many lymphoma cell lines and on hairy cell leukemia cells. Isoform 1, isoform 3, isoform 4 and isoform 5 are detected in lymph node, spleen, bone marrow, and small intestine with preponderance of isoform 3. Expressed in mature and memory B-cells and down-regulated in germinal center cells (at protein level).

FCRL5 Antibody - C-terminal region - Protocols

Provided below are standard protocols that you may find useful for product applications.

- [Western Blot](#)
- [Blocking Peptides](#)
- [Dot Blot](#)
- [Immunohistochemistry](#)
- [Immunofluorescence](#)
- [Immunoprecipitation](#)
- [Flow Cytometry](#)
- [Cell Culture](#)

FCRL5 Antibody - C-terminal region - Images



WB Suggested Anti-FCRL5 Antibody Titration: 1.0 µg/ml
Positive Control: Fetal Small Intestine

FCRL5 Antibody - C-terminal region - References

Nakayama Y.,et al.Biochem. Biophys. Res. Commun. 285:830-837(2001).
Hatzivassiliou G.,et al.Immunity 14:277-289(2001).
Davis R.S.,et al.Proc. Natl. Acad. Sci. U.S.A. 98:9772-9777(2001).
Clark H.F.,et al.Genome Res. 13:2265-2270(2003).
Bechtel S.,et al.BMC Genomics 8:399-399(2007).