

HLA-DMA antibody - N-terminal region
Rabbit Polyclonal Antibody
Catalog # AI14642

Specification

HLA-DMA antibody - N-terminal region - Product Information

Application	WB
Primary Accession	O31604
Other Accession	NM_006120 , NP_006111
Reactivity	Human, Rat, Rabbit, Dog
Predicted	Human, Rabbit
Host	Rabbit
Clonality	Polyclonal
Calculated MW	29kDa KDa

HLA-DMA antibody - N-terminal region - Additional Information

Alias Symbol **D6S222E, DMA, HLADM, RING6**
Format

Liquid. Purified antibody supplied in 1x PBS buffer with 0.09% (w/v) sodium azide and 2% sucrose.

Reconstitution & Storage

Add 50 ul of distilled water. Final anti-HLA-DMA antibody concentration is 1 mg/ml in PBS buffer with 2% sucrose. For longer periods of storage, store at 20°C. Avoid repeat freeze-thaw cycles.

Precautions

HLA-DMA antibody - N-terminal region is for research use only and not for use in diagnostic or therapeutic procedures.

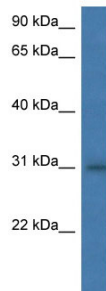
HLA-DMA antibody - N-terminal region - Protein Information

HLA-DMA antibody - N-terminal region - Protocols

Provided below are standard protocols that you may find useful for product applications.

- [Western Blot](#)
- [Blocking Peptides](#)
- [Dot Blot](#)
- [Immunohistochemistry](#)
- [Immunofluorescence](#)
- [Immunoprecipitation](#)
- [Flow Cytometry](#)
- [Cell Culture](#)

HLA-DMA antibody - N-terminal region - Images



WB Suggested Anti-HLA-DMA Antibody Titration: 1.0 µg/ml
Positive Control: MCF7 Whole Cell