

**XRCC3 antibody - middle region**  
**Rabbit Polyclonal Antibody**  
**Catalog # AI14647****Specification**

---

**XRCC3 antibody - middle region - Product Information**

Application	WB
Primary Accession	<a href="#">O43542</a>
Other Accession	<a href="#">NM_005432</a> , <a href="#">NP_005423</a>
Reactivity	Human, Mouse, Bovine, Guinea Pig, Dog
Predicted	Human, Mouse, Bovine, Guinea Pig, Dog
Host	Rabbit
Clonality	Polyclonal
Calculated MW	38kDa KDa

**XRCC3 antibody - middle region - Additional Information****Gene ID 7517**

Alias Symbol	CMM6
<b>Other Names</b>	
DNA repair protein XRCC3, X-ray repair cross-complementing protein 3, XRCC3	

**Format**

Liquid. Purified antibody supplied in 1x PBS buffer with 0.09% (w/v) sodium azide and 2% sucrose.

**Reconstitution & Storage**

Add 50 ul of distilled water. Final anti-XRCC3 antibody concentration is 1 mg/ml in PBS buffer with 2% sucrose. For longer periods of storage, store at 20°C. Avoid repeat freeze-thaw cycles.

**Precautions**

XRCC3 antibody - middle region is for research use only and not for use in diagnostic or therapeutic procedures.

**XRCC3 antibody - middle region - Protein Information****Name XRCC3****Function**

Involved in the homologous recombination repair (HRR) pathway of double-stranded DNA, thought to repair chromosomal fragmentation, translocations and deletions. Part of the RAD51 paralog protein complex CX3 which acts in the BRCA1-BRCA2-dependent HR pathway. Upon DNA damage, CX3 acts downstream of RAD51 recruitment; the complex binds predominantly to the intersection of the four duplex arms of the Holliday junction (HJ) and to junctions of replication forks. Involved in HJ resolution and thus in processing HR intermediates late in the DNA repair process; the function may be linked to the CX3 complex and seems to involve GEN1 during mitotic cell cycle progression. Part of a PALB2-scaffolded HR complex containing BRCA2 and RAD51C and which is thought to play a role in DNA repair by HR. Plays a role in regulating mitochondrial DNA copy

number under conditions of oxidative stress in the presence of RAD51 and RAD51C.

#### **Cellular Location**

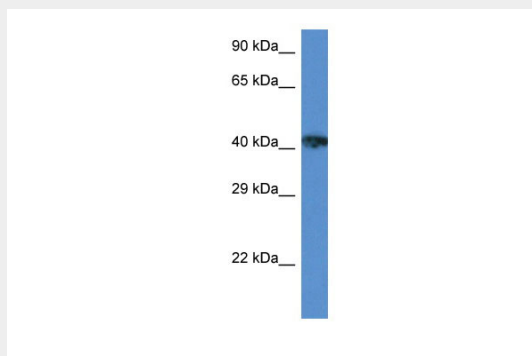
Nucleus. Cytoplasm. Cytoplasm, perinuclear region. Mitochondrion. Note=Accumulates in discrete nuclear foci prior to DNA damage, and these foci persist throughout the time course of DNA repair

#### **XRCC3 antibody - middle region - Protocols**

Provided below are standard protocols that you may find useful for product applications.

- [Western Blot](#)
- [Blocking Peptides](#)
- [Dot Blot](#)
- [Immunohistochemistry](#)
- [Immunofluorescence](#)
- [Immunoprecipitation](#)
- [Flow Cytometry](#)
- [Cell Culture](#)

#### **XRCC3 antibody - middle region - Images**



WB Suggested Anti-XRCC3 Antibody Titration: 1.0 µg/ml  
Positive Control: ACHN Whole Cell

#### **XRCC3 antibody - middle region - References**

Liu N.,et al.Mol. Cell 1:783-793(1998).  
Masson J.Y.,et al.Genes Dev. 15:3296-3307(2001).  
Kuschel B.,et al.Hum. Mol. Genet. 11:1399-1407(2002).  
Miller K.A.,et al.J. Biol. Chem. 277:8406-8411(2002).  
Liu N.,et al.Nucleic Acids Res. 30:1009-1015(2002).