

PFKP antibody - C-terminal region
Rabbit Polyclonal Antibody
Catalog # AI14732

Specification

PFKP antibody - C-terminal region - Product Information

Application	WB
Primary Accession	O01813
Other Accession	NM_002627 , NP_002618
Reactivity	Human
Predicted	Human
Host	Rabbit
Clonality	Polyclonal
Calculated MW	85kDa KDa

PFKP antibody - C-terminal region - Additional Information

Gene ID 5214

Alias Symbol **FLJ40226, PFK-C, PFKF**

Other Names

ATP-dependent 6-phosphofructokinase, platelet type {ECO:0000255|HAMAP-Rule:MF_03184}, ATP-PFK {ECO:0000255|HAMAP-Rule:MF_03184}, PFK-P, 2.7.1.11 {ECO:0000255|HAMAP-Rule:MF_03184}, 6-phosphofructokinase type C, Phosphofructo-1-kinase isozyme C, PFK-C, Phosphohexokinase {ECO:0000255|HAMAP-Rule:MF_03184}, PFKP, PFKF

Format

Liquid. Purified antibody supplied in 1x PBS buffer with 0.09% (w/v) sodium azide and 2% sucrose.

Reconstitution & Storage

Add 50 ul of distilled water. Final anti-PFKP antibody concentration is 1 mg/ml in PBS buffer with 2% sucrose. For longer periods of storage, store at 20°C. Avoid repeat freeze-thaw cycles.

Precautions

PFKP antibody - C-terminal region is for research use only and not for use in diagnostic or therapeutic procedures.

PFKP antibody - C-terminal region - Protein Information

Name PFKP

Synonyms PFKF

Function

Catalyzes the phosphorylation of D-fructose 6-phosphate to fructose 1,6-bisphosphate by ATP, the first committing step of glycolysis.

Cellular Location

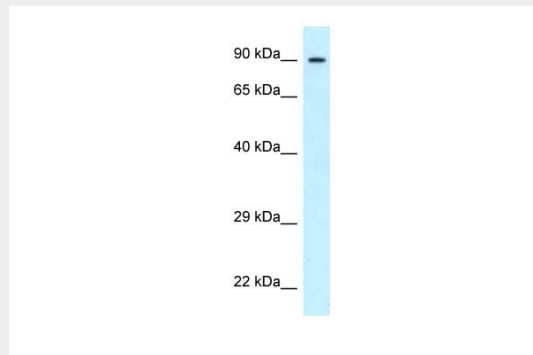
Cytoplasm {ECO:0000255|HAMAP-Rule:MF_03184}.

PFKP antibody - C-terminal region - Protocols

Provided below are standard protocols that you may find useful for product applications.

- [Western Blot](#)
- [Blocking Peptides](#)
- [Dot Blot](#)
- [Immunohistochemistry](#)
- [Immunofluorescence](#)
- [Immunoprecipitation](#)
- [Flow Cytometry](#)
- [Cell Culture](#)

PFKP antibody - C-terminal region - Images



WB Suggested Anti-PFKP Antibody Titration: 1.0 μ g/ml

Positive Control: RPMI-8226 Whole Cell
PFKP is supported by BioGPS gene expression data to be expressed in RPMI 8226

PFKP antibody - C-terminal region - References

- Eto K., et al. *Biochem. Biophys. Res. Commun.* 198:990-998(1994).
Ota T., et al. *Nat. Genet.* 36:40-45(2004).
Deloukas P., et al. *Nature* 429:375-381(2004).
Simpson C.J., et al. *Biochem. Biophys. Res. Commun.* 180:197-203(1991).
Rush J., et al. *Nat. Biotechnol.* 23:94-101(2005).