

ARFGAP3 antibody - C-terminal region
Rabbit Polyclonal Antibody
Catalog # AI14733

Specification

ARFGAP3 antibody - C-terminal region - Product Information

Application	WB
Primary Accession	O9NP61
Other Accession	NM_014570 , NP_055385
Reactivity	Human, Rat, Pig, Horse, Bovine, Dog
Predicted	Human, Horse, Dog
Host	Rabbit
Clonality	Polyclonal
Calculated MW	57kDa KDa

ARFGAP3 antibody - C-terminal region - Additional Information

Gene ID 26286

Alias Symbol **ARFGAP1, FLJ45618**
Other Names
ADP-ribosylation factor GTPase-activating protein 3, ARF GAP 3, ARFGAP3, ARFGAP1

Format

Liquid. Purified antibody supplied in 1x PBS buffer with 0.09% (w/v) sodium azide and 2% sucrose.

Reconstitution & Storage

Add 50 ul of distilled water. Final anti-ARFGAP3 antibody concentration is 1 mg/ml in PBS buffer with 2% sucrose. For longer periods of storage, store at 20°C. Avoid repeat freeze-thaw cycles.

Precautions

ARFGAP3 antibody - C-terminal region is for research use only and not for use in diagnostic or therapeutic procedures.

ARFGAP3 antibody - C-terminal region - Protein Information

Name ARFGAP3

Synonyms ARFGAP1

Function

GTPase-activating protein (GAP) for ADP ribosylation factor 1 (ARF1). Hydrolysis of ARF1-bound GTP may lead to dissociation of coatomer from Golgi-derived membranes to allow fusion with target membranes.

Cellular Location

Cytoplasm. Golgi apparatus membrane; Peripheral membrane protein; Cytoplasmic side.
Note=Also found on peripheral punctate structures likely to be endoplasmic reticulum-Golgi

intermediate compartment

Tissue Location

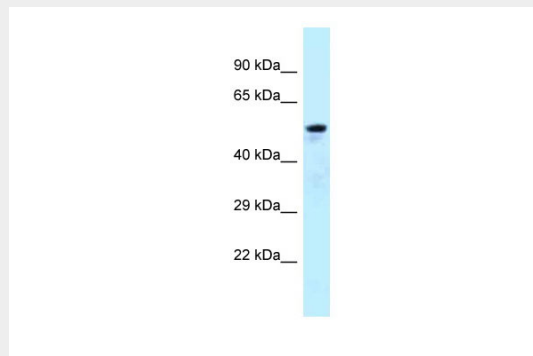
Widely expressed. Highest expression in endocrine glands (pancreas, pituitary gland, salivary gland, and prostate) and testis with a much higher expression in the testis than in the ovary

ARFGAP3 antibody - C-terminal region - Protocols

Provided below are standard protocols that you may find useful for product applications.

- [Western Blot](#)
- [Blocking Peptides](#)
- [Dot Blot](#)
- [Immunohistochemistry](#)
- [Immunofluorescence](#)
- [Immunoprecipitation](#)
- [Flow Cytometry](#)
- [Cell Culture](#)

ARFGAP3 antibody - C-terminal region - Images



WB Suggested Anti-ARFGAP3 Antibody Titration: 0.125 µg/ml
Positive Control: Fetal Lung

ARFGAP3 antibody - C-terminal region - References

- Zhang C., et al. Genomics 63:400-408(2000).
Collins J.E., et al. Genome Res. 13:27-36(2003).
Collins J.E., et al. Genome Biol. 5:R84.1-R84.11(2004).
Dunham I., et al. Nature 402:489-495(1999).
Bechtel S., et al. BMC Genomics 8:399-399(2007).