

**MICAL1 antibody - C-terminal region**  
**Rabbit Polyclonal Antibody**  
**Catalog # AI14748****Specification**

---

**MICAL1 antibody - C-terminal region - Product Information**

Application	WB
Primary Accession	<a href="#">Q8TDZ2-2</a>
Other Accession	<a href="#">NM_001159291</a> , <a href="#">NP_001152763</a>
Reactivity	Human, Rat, Rabbit, Pig, Horse, Bovine, Guinea Pig, Dog
Predicted Host	Human, Rabbit, Pig, Horse, Bovine, Dog
Clonality	Rabbit
Calculated MW	Polyclonal 107kDa KDa

**MICAL1 antibody - C-terminal region - Additional Information**

Alias Symbol	DKFZp434B1517, FLJ11937, FLJ21739, MICAL, MICAL-1, NICAL
--------------	--

**Format**

Liquid. Purified antibody supplied in 1x PBS buffer with 0.09% (w/v) sodium azide and 2% sucrose.

**Reconstitution & Storage**

Add 50 ul of distilled water. Final anti-MICAL1 antibody concentration is 1 mg/ml in PBS buffer with 2% sucrose. For longer periods of storage, store at 20°C. Avoid repeat freeze-thaw cycles.

**Precautions**

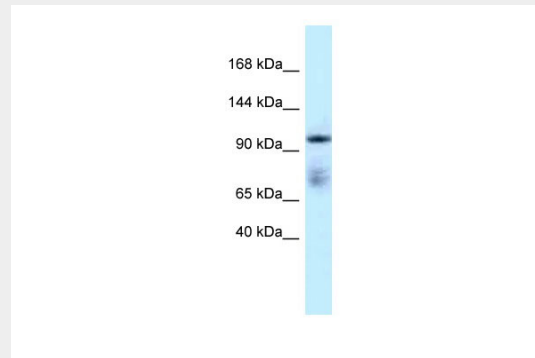
MICAL1 antibody - C-terminal region is for research use only and not for use in diagnostic or therapeutic procedures.

**MICAL1 antibody - C-terminal region - Protein Information****MICAL1 antibody - C-terminal region - Protocols**

Provided below are standard protocols that you may find useful for product applications.

- [Western Blot](#)
- [Blocking Peptides](#)
- [Dot Blot](#)
- [Immunohistochemistry](#)
- [Immunofluorescence](#)
- [Immunoprecipitation](#)
- [Flow Cytometry](#)
- [Cell Culture](#)

**MICAL1 antibody - C-terminal region - Images**



WB Suggested Anti-MICAL1 Antibody Titration: 1.0  $\mu\text{g/ml}$   
Positive Control: Placenta