

PPP1R3B antibody - N-terminal region
Rabbit Polyclonal Antibody
Catalog # AI14750**Specification**

PPP1R3B antibody - N-terminal region - Product Information

| | |
|-------------------|---|
| Application | WB |
| Primary Accession | Q86XI6 |
| Other Accession | NM_024607 , NP_078883 |
| Reactivity | Human, Mouse, Rat, Rabbit, Goat, Horse, Bovine, Guinea Pig, Dog |
| Predicted Host | Rabbit, Goat, Dog |
| Clonality | Rabbit |
| Calculated MW | Polyclonal 31kDa KDa |

PPP1R3B antibody - N-terminal region - Additional Information**Gene ID** 79660**Alias Symbol** **FLJ14005, FLJ34675, GL, PPP1R4, PTG**
Other Names

Protein phosphatase 1 regulatory subunit 3B, Hepatic glycogen-targeting protein phosphatase 1 regulatory subunit GL, Protein phosphatase 1 regulatory subunit 4, PP1 subunit R4, Protein phosphatase 1 subunit GL, PTG, PPP1R3B, PPP1R4

Format

Liquid. Purified antibody supplied in 1x PBS buffer with 0.09% (w/v) sodium azide and 2% sucrose.

Reconstitution & Storage

Add 50 ul of distilled water. Final anti-PPP1R3B antibody concentration is 1 mg/ml in PBS buffer with 2% sucrose. For longer periods of storage, store at 20°C. Avoid repeat freeze-thaw cycles.

Precautions

PPP1R3B antibody - N-terminal region is for research use only and not for use in diagnostic or therapeutic procedures.

PPP1R3B antibody - N-terminal region - Protein Information**Name** PPP1R3B**Synonyms** PPP1R4**Function**

Acts as a glycogen-targeting subunit for phosphatase PP1. Facilitates interaction of the PP1 with enzymes of the glycogen metabolism and regulates its activity. Suppresses the rate at which PP1 dephosphorylates (inactivates) glycogen phosphorylase and enhances the rate at which it activates glycogen synthase and therefore limits glycogen breakdown. Its activity is inhibited by

PYGL, resulting in inhibition of the glycogen synthase and glycogen phosphorylase phosphatase activities of PP1. Dramatically increases basal and insulin-stimulated glycogen synthesis upon overexpression in hepatocytes (By similarity).

Tissue Location

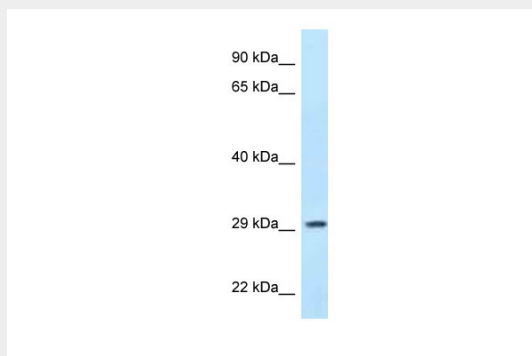
Highly expressed in the liver and, at lower levels, in skeletal muscle, including in vastus lateralis, gastrocnemius and soleus (at protein level). Highest mRNA levels are observed in skeletal muscle, and only moderate levels in liver and heart. Weak expression in placenta and lung.

PPP1R3B antibody - N-terminal region - Protocols

Provided below are standard protocols that you may find useful for product applications.

- [Western Blot](#)
- [Blocking Peptides](#)
- [Dot Blot](#)
- [Immunohistochemistry](#)
- [Immunofluorescence](#)
- [Immunoprecipitation](#)
- [Flow Cytometry](#)
- [Cell Culture](#)

PPP1R3B antibody - N-terminal region - Images



WB Suggested Anti-PPP1R3B Antibody Titration: 1.0 µg/ml
Positive Control: MCF7 Whole Cell

PPP1R3B antibody - N-terminal region - References

Ota T., et al. Nat. Genet. 36:40-45(2004).
Mural R.J., et al. Submitted (JUL-2005) to the EMBL/GenBank/DDBJ databases.
Munro S., et al. Diabetes 51:591-598(2002).
Montori-Grau M., et al. Biochem. J. 405:107-113(2007).