

TPD52L2 antibody - C-terminal region
Rabbit Polyclonal Antibody
Catalog # AI14785

Specification

TPD52L2 antibody - C-terminal region - Product Information

Application	WB
Primary Accession	O43399
Other Accession	NM_003288 , NP_003279
Reactivity	Human, Mouse, Rat, Rabbit, Horse, Bovine, Guinea Pig, Dog
Predicted Host	Human, Mouse, Rat, Rabbit, Chicken, Dog
Clonality	Rabbit
Calculated MW	Polyclonal 22kDa KDa

TPD52L2 antibody - C-terminal region - Additional Information

Gene ID 7165

Alias Symbol D54, DKFZp686A1765, hD54
Other Names
Tumor protein D54, hD54, Tumor protein D52-like 2, TPD52L2

Format

Liquid. Purified antibody supplied in 1x PBS buffer with 0.09% (w/v) sodium azide and 2% sucrose.

Reconstitution & Storage

Add 50 ul of distilled water. Final anti-TPD52L2 antibody concentration is 1 mg/ml in PBS buffer with 2% sucrose. For longer periods of storage, store at 20°C. Avoid repeat freeze-thaw cycles.

Precautions

TPD52L2 antibody - C-terminal region is for research use only and not for use in diagnostic or therapeutic procedures.

TPD52L2 antibody - C-terminal region - Protein Information

Name TPD52L2

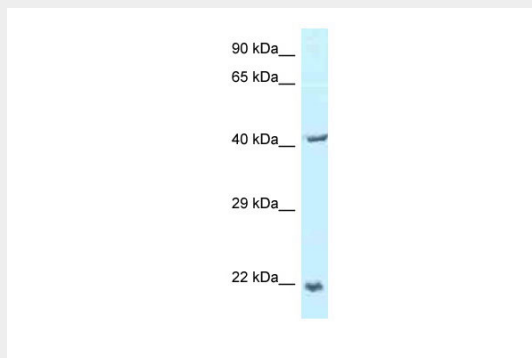
TPD52L2 antibody - C-terminal region - Protocols

Provided below are standard protocols that you may find useful for product applications.

- [Western Blot](#)
- [Blocking Peptides](#)
- [Dot Blot](#)

- [Immunohistochemistry](#)
- [Immunofluorescence](#)
- [Immunoprecipitation](#)
- [Flow Cytometry](#)
- [Cell Culture](#)

TPD52L2 antibody - C-terminal region - Images



WB Suggested Anti-TPD52L2 Antibody Titration: 1.0 μ g/ml
Positive Control: 721_B Whole Cell

TPD52L2 antibody - C-terminal region - References

- Nourse C.R., et al. *Biochim. Biophys. Acta* 1443:155-168(1998).
Ota T., et al. *Nat. Genet.* 36:40-45(2004).
Kalnina N., et al. Submitted (OCT-2004) to the EMBL/GenBank/DDBJ databases.
Deloukas P., et al. *Nature* 414:865-871(2001).
Mural R.J., et al. Submitted (SEP-2005) to the EMBL/GenBank/DDBJ databases.