

Nploc4 Antibody - N-terminal region
Rabbit Polyclonal Antibody
Catalog # AI14808**Specification**

Nploc4 Antibody - N-terminal region - Product Information

Application	WB
Primary Accession	P60670
Other Accession	NM_001195023 , NP_001181952
Reactivity	Human, Mouse, Rat, Rabbit, Horse, Bovine, Guinea Pig, Dog
Predicted	Human, Mouse, Rat, Rabbit, Pig, Horse, Bovine, Guinea Pig, Dog
Host	Rabbit
Clonality	Polyclonal
Calculated MW	66kDa kDa

Nploc4 Antibody - N-terminal region - Additional Information**Gene ID** 217365**Alias Symbol** AK129375, Npl4, mKIAA1499**Other Names**

Nuclear protein localization protein 4 homolog, Protein NPL4, Nploc4, Kiaa1499, Npl4

Format

Liquid. Purified antibody supplied in 1x PBS buffer with 0.09% (w/v) sodium azide and 2% sucrose.

Reconstitution & Storage

Add 50 ul of distilled water. Final anti-Nploc4 antibody concentration is 1 mg/ml in PBS buffer with 2% sucrose. For longer periods of storage, store at 20°C. Avoid repeat freeze-thaw cycles.

Precautions

Nploc4 Antibody - N-terminal region is for research use only and not for use in diagnostic or therapeutic procedures.

Nploc4 Antibody - N-terminal region - Protein Information**Name** Nploc4**Synonyms** Kiaa1499, Npl4**Function**

The ternary complex containing UFD1, VCP and NPLOC4 binds ubiquitinated proteins and is necessary for the export of misfolded proteins from the ER to the cytoplasm, where they are degraded by the proteasome. The NPLOC4-UFD1-VCP complex regulates spindle disassembly at the end of mitosis and is necessary for the formation of a closed nuclear envelope (By similarity). Acts as a negative regulator of type I interferon production via the complex formed with VCP and

UFD1, which binds to RIGI and recruits RNF125 to promote ubiquitination and degradation of RIGI (By similarity).

Cellular Location

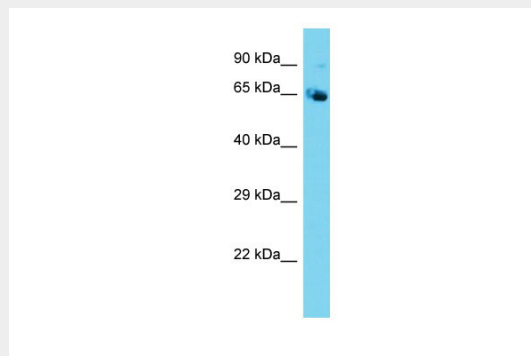
Cytoplasm, cytosol {ECO:0000250|UniProtKB:Q9ES54}. Endoplasmic reticulum {ECO:0000250|UniProtKB:Q9ES54}. Nucleus {ECO:0000250|UniProtKB:Q9ES54} Note=Associated with the endoplasmic reticulum and nuclear {ECO:0000250|UniProtKB:Q9ES54}

Nploc4 Antibody - N-terminal region - Protocols

Provided below are standard protocols that you may find useful for product applications.

- [Western Blot](#)
- [Blocking Peptides](#)
- [Dot Blot](#)
- [Immunohistochemistry](#)
- [Immunofluorescence](#)
- [Immunoprecipitation](#)
- [Flow Cytometry](#)
- [Cell Culture](#)

Nploc4 Antibody - N-terminal region - Images



Host: Rabbit
Target Name: Nploc4
Sample Tissue: Mouse Testis lysates
Antibody Dilution: 1.0µg/ml

Nploc4 Antibody - N-terminal region - References

Okazaki N.,et al.DNA Res. 10:167-180(2003).
Church D.M.,et al.PLoS Biol. 7:E1000112-E1000112(2009).
Park J.,et al.Mol. Cell 50:919-930(2013).