

RUBCNL antibody - N-terminal region
Rabbit Polyclonal Antibody
Catalog # AI14842**Specification**

RUBCNL antibody - N-terminal region - Product Information

Application	WB
Primary Accession	O9H714
Other Accession	NM_025113 , NP_079389
Reactivity	Human, Mouse, Rat, Rabbit, Pig, Bovine, Dog, Guinea Pig, Horse
Predicted	Human, Mouse, Rat, Rabbit, Pig, Chicken, Bovine, Dog, Guinea Pig, Horse
Host	Rabbit
Clonality	Polyclonal
Calculated MW	39kDa kDa

RUBCNL antibody - N-terminal region - Additional Information**Gene ID** 80183**Alias Symbol** BZAP45, KIAA0005, Nbla10236**Other Names**

Uncharacterized protein KIAA0226-like, KIAA0226L, C13orf18

Format

Liquid. Purified antibody supplied in 1x PBS buffer with 0.09% (w/v) sodium azide and 2% sucrose.

Reconstitution & Storage

Add 50 ul of distilled water. Final anti-BZW1 antibody concentration is 1 mg/ml in PBS buffer with 2% sucrose. For longer periods of storage, store at 20°C. Avoid repeat freeze-thaw cycles.

Precautions

RUBCNL antibody - N-terminal region is for research use only and not for use in diagnostic or therapeutic procedures.

RUBCNL antibody - N-terminal region - Protein Information**Name** RUBCNL ([HGNC:20420](#))**Function**

Regulator of autophagy that promotes autophagosome maturation by facilitating the biogenesis of phosphatidylinositol 3-phosphate (PtdIns(3)P) in late steps of autophagy (PubMed:28306502, PubMed:30704899). Acts by antagonizing RUBCN, thereby stimulating phosphatidylinositol 3-kinase activity of the PI3K/PI3KC3 complex (PubMed:28306502). Following anchorage to the autophagosomal SNARE STX17,

promotes the recruitment of PI3K/PI3KC3 and HOPS complexes to the autophagosome to regulate the fusion specificity of autophagosomes with late endosomes/lysosomes (PubMed:28306502). Binds phosphoinositides phosphatidylinositol 3-phosphate (PtdIns(3)P), 4-phosphate (PtdIns(4)P) and 5-phosphate (PtdIns(5)P) (PubMed:28306502). In addition to its role in autophagy, acts as a regulator of lipid and glycogen homeostasis (By similarity). May act as a tumor suppressor (Probable).

Cellular Location

Cytoplasmic vesicle, autophagosome membrane; Peripheral membrane protein. Note=Associates with late autophagic structure (PubMed:28306502). Recruitment to autophagosome membrane is promoted by autophagic stimuli (PubMed:28306502)

Tissue Location

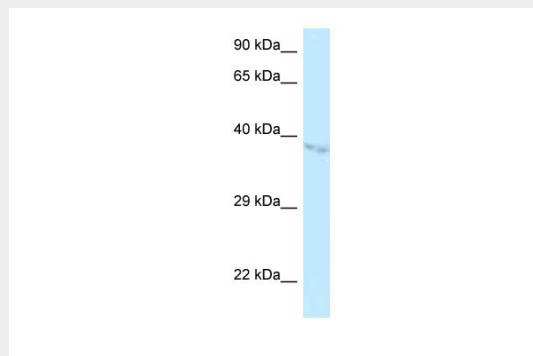
Expressed weakly in cervical carcinoma cell lines.

RUBCNL antibody - N-terminal region - Protocols

Provided below are standard protocols that you may find useful for product applications.

- [Western Blot](#)
- [Blocking Peptides](#)
- [Dot Blot](#)
- [Immunohistochemistry](#)
- [Immunofluorescence](#)
- [Immunoprecipitation](#)
- [Flow Cytometry](#)
- [Cell Culture](#)

RUBCNL antibody - N-terminal region - Images



WB Suggested Anti-BZW1 Antibody Titration: 1.0 µg/ml

Positive Control: HepG2 Whole Cell BZW1 is supported by BioGPS gene expression data to be expressed in HepG2

RUBCNL antibody - N-terminal region - References

- Ota T., et al. Nat. Genet. 36:40-45(2004).
Dunham A., et al. Nature 428:522-528(2004).
Oppermann F.S., et al. Mol. Cell. Proteomics 8:1751-1764(2009).