

Sqrdl antibody - C-terminal region
Rabbit Polyclonal Antibody
Catalog # AI14856

Specification

Sqrdl antibody - C-terminal region - Product Information

Application	WB
Primary Accession	O9R112
Other Accession	NM_021507 , NP_067482
Reactivity	Human, Mouse, Rat, Rabbit, Pig, Horse, Bovine, Guinea Pig, Dog
Predicted	Human, Mouse, Rat, Rabbit, Pig, Chicken, Horse, Bovine, Dog
Host	Rabbit
Clonality	Polyclonal
Calculated MW	50kDa KDa

Sqrdl antibody - C-terminal region - Additional Information

Gene ID 59010

Alias Symbol 0610039J17Rik, 4930557M22Rik

Other Names

Sulfide:quinone oxidoreductase, mitochondrial, SQOR, 1.8.5.-, Sqrdl

Format

Liquid. Purified antibody supplied in 1x PBS buffer with 0.09% (w/v) sodium azide and 2% sucrose.

Reconstitution & Storage

Add 50 ul of distilled water. Final anti-Sqrdl antibody concentration is 1 mg/ml in PBS buffer with 2% sucrose. For longer periods of storage, store at 20°C. Avoid repeat freeze-thaw cycles.

Precautions

Sqrdl antibody - C-terminal region is for research use only and not for use in diagnostic or therapeutic procedures.

Sqrdl antibody - C-terminal region - Protein Information

Name Sqor {ECO:0000250|UniProtKB:Q9Y6N5}

Function

Catalyzes the oxidation of hydrogen sulfide with the help of a quinone, such as ubiquinone-10, giving rise to thiosulfate and ultimately to sulfane (molecular sulfur) atoms. Requires an additional electron acceptor; can use sulfite, sulfide or cyanide (in vitro). It is believed the in vivo electron acceptor is glutathione.

Cellular Location

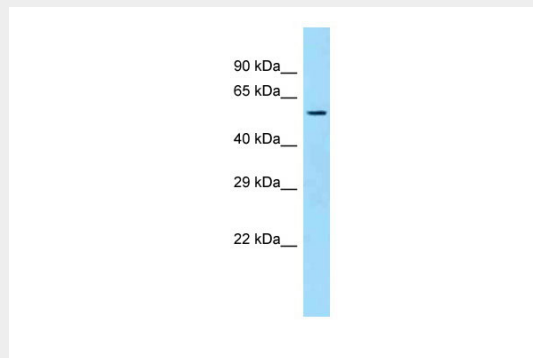
Mitochondrion {ECO:0000250|UniProtKB:Q9Y6N5}.

Sqrdl antibody - C-terminal region - Protocols

Provided below are standard protocols that you may find useful for product applications.

- [Western Blot](#)
- [Blocking Peptides](#)
- [Dot Blot](#)
- [Immunohistochemistry](#)
- [Immunofluorescence](#)
- [Immunoprecipitation](#)
- [Flow Cytometry](#)
- [Cell Culture](#)

Sqrdl antibody - C-terminal region - Images



WB Suggested Anti-Sqrdl Antibody Titration: 1.0 μ g/ml
Positive Control: Mouse Liver

Sqrdl antibody - C-terminal region - References

- Huang L., et al. Submitted (AUG-1999) to the EMBL/GenBank/DDBJ databases.
Carninci P., et al. Science 309:1559-1563(2005).
Rardin M.J., et al. Proc. Natl. Acad. Sci. U.S.A. 110:6601-6606(2013).