

WDR74 antibody - C-terminal region
Rabbit Polyclonal Antibody
Catalog # AI14896**Specification**

WDR74 antibody - C-terminal region - Product Information

Application	WB
Primary Accession	Q6RFH5
Other Accession	NM_018093 , NP_060563
Reactivity	Human, Rat, Rabbit, Pig, Horse, Bovine, Dog
Predicted Host	Human, Rat, Rabbit, Horse, Bovine, Dog
Clonality	Rabbit
Calculated MW	Polyclonal 42kDa KDa

WDR74 antibody - C-terminal region - Additional Information**Gene ID** 54663**Alias Symbol** **FLJ10439, FLJ21730****Other Names**

WD repeat-containing protein 74, NOP seven-associated protein 1, WDR74, NSA1

Format

Liquid. Purified antibody supplied in 1x PBS buffer with 0.09% (w/v) sodium azide and 2% sucrose.

Reconstitution & Storage

Add 50 ul of distilled water. Final anti-WDR74 antibody concentration is 1 mg/ml in PBS buffer with 2% sucrose. For longer periods of storage, store at 20°C. Avoid repeat freeze-thaw cycles.

Precautions

WDR74 antibody - C-terminal region is for research use only and not for use in diagnostic or therapeutic procedures.

WDR74 antibody - C-terminal region - Protein Information**Name** WDR74**Synonyms** NSA1**Function**Regulatory protein of the MTREX-exosome complex involved in the synthesis of the 60S ribosomal subunit (PubMed: [26456651](http://www.uniprot.org/citations/26456651)). Participates in an early cleavage of the pre-rRNA processing pathway in cooperation with NVL (PubMed: [29107693](http://www.uniprot.org/citations/29107693)). Required for blastocyst formation, is necessary for RNA transcription, processing and/or stability during preimplantation development (By similarity).

Cellular Location

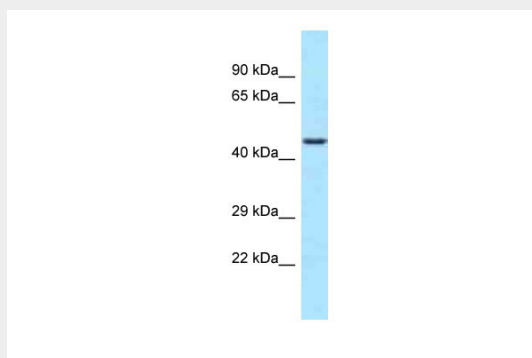
Nucleus, nucleolus. Nucleus Note=Nucleolar location depends on active PolI transcription of pre-rRNA.

WDR74 antibody - C-terminal region - Protocols

Provided below are standard protocols that you may find useful for product applications.

- [Western Blot](#)
- [Blocking Peptides](#)
- [Dot Blot](#)
- [Immunohistochemistry](#)
- [Immunofluorescence](#)
- [Immunoprecipitation](#)
- [Flow Cytometry](#)
- [Cell Culture](#)

WDR74 antibody - C-terminal region - Images



WB Suggested Anti-WDR74 Antibody Titration: 1.0 µg/ml

Positive Control: 721_B Whole Cell
WDR74 is strongly supported by BioGPS gene expression data to be expressed in Human 721_B cells

WDR74 antibody - C-terminal region - References

- Eilbracht J., et al. Submitted (DEC-2003) to the EMBL/GenBank/DDBJ databases.
Ota T., et al. Nat. Genet. 36:40-45(2004).
Scherl A., et al. Mol. Biol. Cell 13:4100-4109(2002).
Dephoure N., et al. Proc. Natl. Acad. Sci. U.S.A. 105:10762-10767(2008).
Olsen J.V., et al. Sci. Signal. 3:RA3-RA3(2010).