

**CD68 antibody - N-terminal region**  
**Rabbit Polyclonal Antibody**  
**Catalog # AI14906****Specification**

---

**CD68 antibody - N-terminal region - Product Information**

Application	WB
Primary Accession	<a href="#">P34810</a>
Other Accession	<a href="#">NM_001251</a> , <a href="#">NP_001242</a>
Reactivity	Human, Horse, Bovine
Predicted	Human, Horse, Bovine
Host	Rabbit
Clonality	Polyclonal
Calculated MW	39kDa KDa

**CD68 antibody - N-terminal region - Additional Information****Gene ID** 968**Alias Symbol** DKFZp686M18236, GP110, SCARD1, LAMP4  
**Other Names**  
Macrosialin, Gp110, CD68, CD68**Format**

Liquid. Purified antibody supplied in 1x PBS buffer with 0.09% (w/v) sodium azide and 2% sucrose.

**Reconstitution & Storage**

Add 50 ul of distilled water. Final anti-CD68 antibody concentration is 1 mg/ml in PBS buffer with 2% sucrose. For longer periods of storage, store at 20°C. Avoid repeat freeze-thaw cycles.

**Precautions**

CD68 antibody - N-terminal region is for research use only and not for use in diagnostic or therapeutic procedures.

**CD68 antibody - N-terminal region - Protein Information****Name** CD68**Function**

Could play a role in phagocytic activities of tissue macrophages, both in intracellular lysosomal metabolism and extracellular cell-cell and cell-pathogen interactions. Binds to tissue- and organ-specific lectins or selectins, allowing homing of macrophage subsets to particular sites. Rapid recirculation of CD68 from endosomes and lysosomes to the plasma membrane may allow macrophages to crawl over selectin-bearing substrates or other cells.

**Cellular Location**

[Isoform Short]: Cell membrane; Single-pass type I membrane protein

### Tissue Location

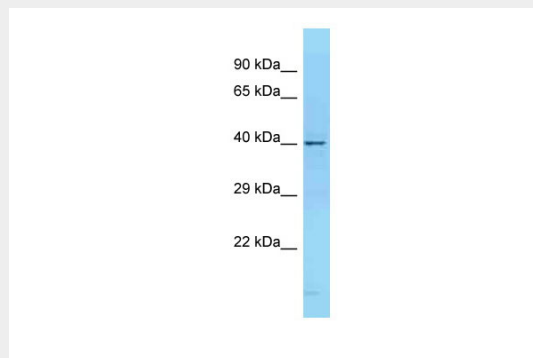
Highly expressed by blood monocytes and tissue macrophages. Also expressed in lymphocytes, fibroblasts and endothelial cells. Expressed in many tumor cell lines which could allow them to attach to selectins on vascular endothelium, facilitating their dissemination to secondary sites.

### CD68 antibody - N-terminal region - Protocols

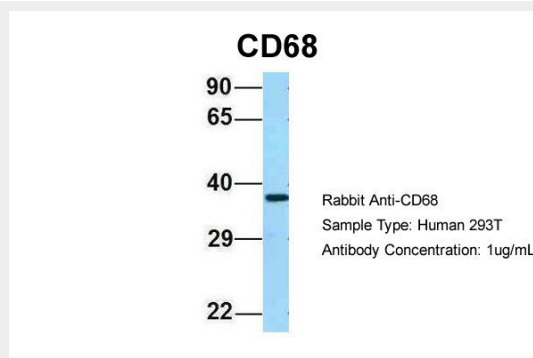
Provided below are standard protocols that you may find useful for product applications.

- [Western Blot](#)
- [Blocking Peptides](#)
- [Dot Blot](#)
- [Immunohistochemistry](#)
- [Immunofluorescence](#)
- [Immunoprecipitation](#)
- [Flow Cytometry](#)
- [Cell Culture](#)

### CD68 antibody - N-terminal region - Images



WB Suggested Anti-CD68 Antibody Titration: 1.0 µg/ml  
Positive Control: NCI-H226 Whole Cell



Host:Rabbit  
Target Name:CD68  
Sample Tissue:Human 293T  
Antibody Dilution: 1.0µg/ml

### CD68 antibody - N-terminal region - References

Holness C.L., et al. Blood 81:1607-1613(1993).

Kalnine N., et al. Submitted (JUL-2003) to the EMBL/GenBank/DDBJ databases.  
Ota T., et al. Nat. Genet. 36:40-45(2004).  
Suzuki Y., et al. Submitted (APR-2005) to the EMBL/GenBank/DDBJ databases.  
Zody M.C., et al. Nature 440:1045-1049(2006).