

**Angpt2 Antibody - middle region**  
**Rabbit Polyclonal Antibody**  
**Catalog # AI14929****Specification**

---

**Angpt2 Antibody - middle region - Product Information**

|                   |  |
|-------------------|--|
| Application       | <b>WB</b>  |
| Primary Accession | <a href="#">O35608</a>   |
| Other Accession   | <a href="#">NM_007426</a> , <a href="#">NP_031452</a>                        |
| Reactivity        | <b>Human, Mouse, Rat, Rabbit, Pig, Sheep, Horse, Bovine, Guinea Pig, Dog</b> |
| Predicted         | <b>Human, Mouse, Rat, Rabbit, Pig, Sheep, Horse, Bovine, Guinea Pig, Dog</b> |
| Host              | <b>Rabbit</b>  |
| Clonality         | <b>Polyclonal</b>  |
| Calculated MW     | <b>56kDa KDa</b>   |

**Angpt2 Antibody - middle region - Additional Information****Gene ID** 11601

|                                      |                           |
|--------------------------------------|---------------------------|
| Alias Symbol                         | <b>Agpt2, Ang-2, Ang2</b> |
| <b>Other Names</b>                   |                           |
| Angiopoietin-2, ANG-2, Angpt2, Agpt2 |                           |

**Format**

Liquid. Purified antibody supplied in 1x PBS buffer with 0.09% (w/v) sodium azide and 2% sucrose.

**Reconstitution & Storage**

Add 50 ul of distilled water. Final anti-Angpt2 antibody concentration is 1 mg/ml in PBS buffer with 2% sucrose. For longer periods of storage, store at 20°C. Avoid repeat freeze-thaw cycles.

**Precautions**

Angpt2 Antibody - middle region is for research use only and not for use in diagnostic or therapeutic procedures.

**Angpt2 Antibody - middle region - Protein Information****Name** Angpt2**Synonyms** Agpt2**Function**

Binds to TEK/TIE2, competing for the ANGPT1 binding site, and modulating ANGPT1 signaling (By similarity). Can induce tyrosine phosphorylation of TEK/TIE2 in the absence of ANGPT1 (By similarity). In the absence of angiogenic inducers, such as VEGF, ANGPT2-mediated loosening of cell-matrix contacts may induce endothelial cell apoptosis with consequent vascular regression (By similarity). In concert with VEGF, it may facilitate endothelial cell migration and proliferation, thus

servicing as a permissive angiogenic signal (By similarity). Involved in the regulation of lymphangiogenesis (PubMed:<a href="http://www.uniprot.org/citations/28179430" target="\_blank">28179430</a>, PubMed:<a href="http://www.uniprot.org/citations/32908006" target="\_blank">32908006</a>).

#### Cellular Location

Secreted {ECO:0000250|UniProtKB:O15123}.

#### Tissue Location

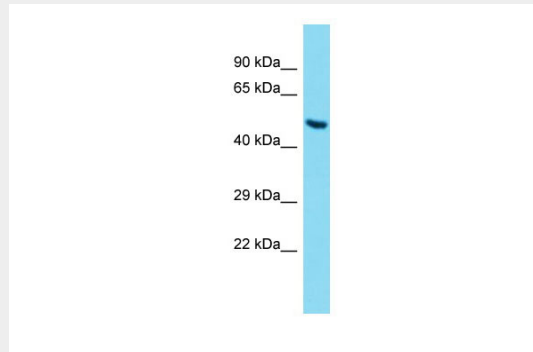
Expressed in the ovary, uterus and placenta.

### Angpt2 Antibody - middle region - Protocols

Provided below are standard protocols that you may find useful for product applications.

- [Western Blot](#)
- [Blocking Peptides](#)
- [Dot Blot](#)
- [Immunohistochemistry](#)
- [Immunofluorescence](#)
- [Immunoprecipitation](#)
- [Flow Cytometry](#)
- [Cell Culture](#)

### Angpt2 Antibody - middle region - Images



Host: Rabbit  
Target Name: Angpt2  
Sample Tissue: Mouse Liver lysates  
Antibody Dilution: 1.0µg/ml

### Angpt2 Antibody - middle region - References

Maisonpierre P.C., et al. Science 277:55-60(1997).  
Carninci P., et al. Science 309:1559-1563(2005).