

Rap1a Antibody - C-terminal region
Rabbit Polyclonal Antibody
Catalog # AI14958**Specification**

Rap1a Antibody - C-terminal region - Product Information

Application	WB
Primary Accession	P62835
Other Accession	NM_145541 , NP_663516
Reactivity	Human, Mouse, Rat, Rabbit, Pig, Goat, Horse, Bovine, Guinea Pig, Dog
Predicted	Human, Mouse, Rat, Rabbit, Pig, Goat, Horse, Bovine, Guinea Pig, Dog
Host	Rabbit
Clonality	Polyclonal
Calculated MW	20kDa KDa

Rap1a Antibody - C-terminal region - Additional Information**Gene ID** 109905**Alias Symbol** AI848598, G-22K, Krev-1, Rap1**Other Names**

Ras-related protein Rap-1A, Ras-related protein Krev-1, Rap1a, Krev-1

Format

Liquid. Purified antibody supplied in 1x PBS buffer with 0.09% (w/v) sodium azide and 2% sucrose.

Reconstitution & Storage

Add 50 ul of distilled water. Final anti-Rap1a antibody concentration is 1 mg/ml in PBS buffer with 2% sucrose. For longer periods of storage, store at 20°C. Avoid repeat freeze-thaw cycles.

Precautions

Rap1a Antibody - C-terminal region is for research use only and not for use in diagnostic or therapeutic procedures.

Rap1a Antibody - C-terminal region - Protein Information**Name** Rap1a**Synonyms** Krev-1**Function**

Counteracts the mitogenic function of Ras, at least partly because it can interact with Ras GAPs and RAF in a competitive manner. Together with ITGB1BP1, regulates KRIT1 localization to microtubules and membranes (By similarity). Plays a role in nerve growth factor (NGF)-induced neurite outgrowth. Plays a role in the regulation of embryonic blood vessel formation. Involved in the establishment of basal endothelial barrier function. Facilitates the progressive accumulation of

CDH1 at mature desmosome junctions via cAMP-dependent signaling and its interaction with PKP3 (By similarity). May be involved in the regulation of the vascular endothelial growth factor receptor KDR expression at endothelial cell-cell junctions.

Cellular Location

Cell membrane; Lipid-anchor. Cell junction. Cytoplasm. Cytoplasm, perinuclear region. Early endosome. Late endosome. Note=Recruited from early endosome to late endosome compartment after nerve growth factor (NGF) stimulation. Colocalized with RAPGEF2 in the perinuclear region (By similarity). Localized with RAPGEF2 at cell-cell junctions

Tissue Location

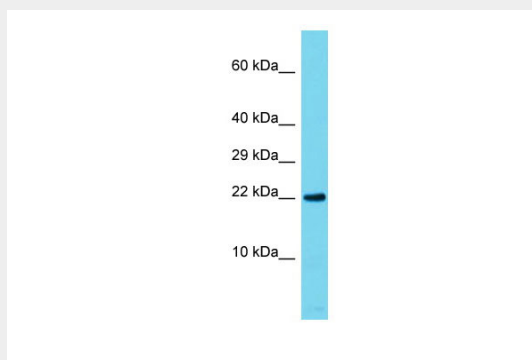
Expressed in the testis and sperm midpiece (at protein level).

Rap1a Antibody - C-terminal region - Protocols

Provided below are standard protocols that you may find useful for product applications.

- [Western Blot](#)
- [Blocking Peptides](#)
- [Dot Blot](#)
- [Immunohistochemistry](#)
- [Immunofluorescence](#)
- [Immunoprecipitation](#)
- [Flow Cytometry](#)
- [Cell Culture](#)

Rap1a Antibody - C-terminal region - Images



Host: Rabbit
Target Name: Rap1a
Sample Tissue: Mouse Testis lysates
Antibody Dilution: 1.0µg/ml

Rap1a Antibody - C-terminal region - References

Kanemura H., et al. Biochem. Biophys. Res. Commun. 387:754-759(2009).