

**CNR2 antibody - C-terminal region**  
**Rabbit Polyclonal Antibody**  
**Catalog # AI14969****Specification**

---

**CNR2 antibody - C-terminal region - Product Information**

Application	WB
Primary Accession	<a href="#">P34972</a>
Other Accession	<a href="#">NM_001841</a> , <a href="#">NP_001832</a>
Reactivity	Human, Mouse, Rat, Horse
Predicted	Human, Mouse, Rat
Host	Rabbit
Clonality	Polyclonal
Calculated MW	40kDa KDa

**CNR2 antibody - C-terminal region - Additional Information****Gene ID** 1269**Alias Symbol** CB2, CX5  
**Other Names**  
Cannabinoid receptor 2, CB-2, CB2, hCB2, CX5, CNR2, CB2A, CB2B**Format**

Liquid. Purified antibody supplied in 1x PBS buffer with 0.09% (w/v) sodium azide and 2% sucrose.

**Reconstitution & Storage**

Add 50 ul of distilled water. Final anti-CNR2 antibody concentration is 1 mg/ml in PBS buffer with 2% sucrose. For longer periods of storage, store at 20°C. Avoid repeat freeze-thaw cycles.

**Precautions**

CNR2 antibody - C-terminal region is for research use only and not for use in diagnostic or therapeutic procedures.

**CNR2 antibody - C-terminal region - Protein Information****Name** CNR2**Synonyms** CB2A, CB2B**Function**

Heterotrimeric G protein-coupled receptor for endocannabinoid 2-arachidonoylglycerol mediating inhibition of adenylate cyclase. May function in inflammatory response, nociceptive transmission and bone homeostasis.

**Cellular Location**

Cell membrane; Multi-pass membrane protein. Cell projection, dendrite. Perikaryon Note=Localizes to apical dendrite of pyramidal neurons.

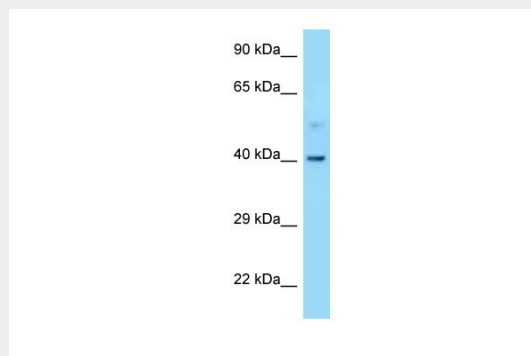
**Tissue Location**

Preferentially expressed in cells of the immune system with higher expression in B-cells and NK cells (at protein level). Expressed in skin in suprabasal layers and hair follicles (at protein level). Highly expressed in tonsil and to a lower extent in spleen, peripheral blood mononuclear cells, and thymus. PubMed:14657172 could not detect expression in normal brain. Expressed in brain by perivascular microglial cells and dorsal root ganglion sensory neurons (at protein level). Two isoforms are produced by alternative promoter usage and differ only in the 5' UTR: isoform CB2A is observed predominantly in testis with some expression in brain, while isoform CB2B is predominant in spleen and leukocytes

**CNR2 antibody - C-terminal region - Protocols**

Provided below are standard protocols that you may find useful for product applications.

- [Western Blot](#)
- [Blocking Peptides](#)
- [Dot Blot](#)
- [Immunohistochemistry](#)
- [Immunofluorescence](#)
- [Immunoprecipitation](#)
- [Flow Cytometry](#)
- [Cell Culture](#)

**CNR2 antibody - C-terminal region - Images**

WB Suggested Anti-CNR2 Antibody Titration: 1.0 µg/ml

Positive Control: 721\_B Whole Cell CNR2 is supported by BioGPS gene expression data to be expressed in 721\_B

**CNR2 antibody - C-terminal region - References**

- Munro S., et al. Nature 365:61-65(1993).  
Liu Q.-R., et al. Genes Brain Behav. 8:519-530(2009).  
Bruess M., et al. Submitted (FEB-2003) to the EMBL/GenBank/DDBJ databases.  
Warren C.N., et al. Submitted (FEB-2003) to the EMBL/GenBank/DDBJ databases.  
Saravanan T., et al. Submitted (NOV-2005) to the EMBL/GenBank/DDBJ databases.