

FCGR2B antibody - C-terminal region
Rabbit Polyclonal Antibody
Catalog # AI14975**Specification**

FCGR2B antibody - C-terminal region - Product Information

Application	WB
Primary Accession	P31994
Other Accession	NM_001002273 , NP_001002273
Reactivity	Human
Predicted	Human
Host	Rabbit
Clonality	Polyclonal
Calculated MW	32kDa KDa

FCGR2B antibody - C-terminal region - Additional Information**Gene ID** 2213**Alias Symbol** **CD32, CD32B, FCG2, FCGR2, IGFR2****Other Names**

Low affinity immunoglobulin gamma Fc region receptor II-b, IgG Fc receptor II-b, CDw32, Fc-gamma RII-b, Fc-gamma-RIIb, FcRII-b, CD32, FCGR2B, CD32, FCG2, IGFR2

Format

Liquid. Purified antibody supplied in 1x PBS buffer with 0.09% (w/v) sodium azide and 2% sucrose.

Reconstitution & Storage

Add 50 ul of distilled water. Final anti-FCGR2B antibody concentration is 1 mg/ml in PBS buffer with 2% sucrose. For longer periods of storage, store at 20°C. Avoid repeat freeze-thaw cycles.

Precautions

FCGR2B antibody - C-terminal region is for research use only and not for use in diagnostic or therapeutic procedures.

FCGR2B antibody - C-terminal region - Protein Information**Name** FCGR2B**Synonyms** CD32, FCG2, IGFR2**Function**

Receptor for the Fc region of complexed or aggregated immunoglobulins gamma. Low affinity receptor. Involved in a variety of effector and regulatory functions such as phagocytosis of immune complexes and modulation of antibody production by B-cells. Binding to this receptor results in down-modulation of previous state of cell activation triggered via antigen receptors on B-cells (BCR), T-cells (TCR) or via another Fc receptor. Isoform IIB1 fails to mediate endocytosis or phagocytosis. Isoform IIB2 does not trigger phagocytosis.

Cellular Location

Cell membrane; Single-pass type I membrane protein

Tissue Location

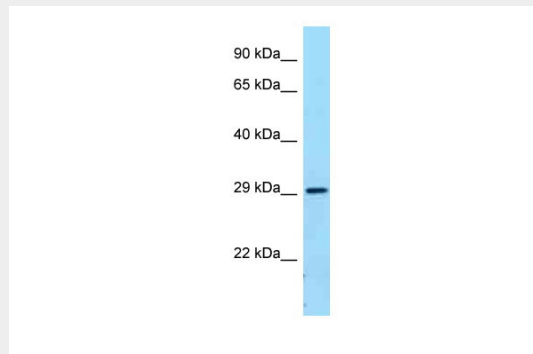
Is the most broadly distributed Fc-gamma-receptor. Expressed in monocyte, neutrophils, macrophages, basophils, eosinophils, Langerhans cells, B-cells, platelets cells and placenta (endothelial cells). Not detected in natural killer cells

FCGR2B antibody - C-terminal region - Protocols

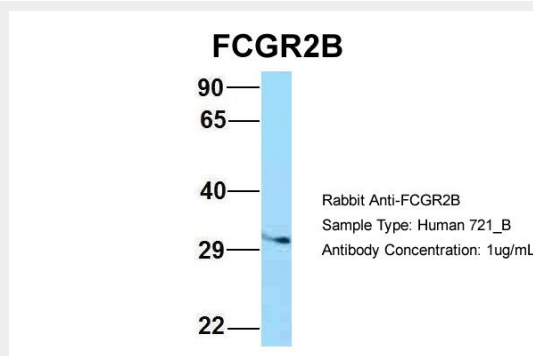
Provided below are standard protocols that you may find useful for product applications.

- [Western Blot](#)
- [Blocking Peptides](#)
- [Dot Blot](#)
- [Immunohistochemistry](#)
- [Immunofluorescence](#)
- [Immunoprecipitation](#)
- [Flow Cytometry](#)
- [Cell Culture](#)

FCGR2B antibody - C-terminal region - Images



WB Suggested Anti-FCGR2B Antibody Titration: 1.0 µg/ml
Positive Control: Fetal Lung



Host:Rabbit

Target Name:FCGR2B

Sample Tissue:721_B

Antibody Dilution: 1.0µg/mlFCGR2B is supported by BioGPS gene expression data to be expressed in 721_B

FCGR2B antibody - C-terminal region - References

- Ng S.,et al.Submitted (JAN-1997) to the EMBL/GenBank/DDBJ databases.
Stuart S.G.,et al.EMBO J. 8:3657-3666(1989).
Brooks D.G.,et al.J. Exp. Med. 170:1369-1385(1989).
Engelhardt W.,et al.Eur. J. Immunol. 20:1367-1377(1990).
Ebert L.,et al.Submitted (MAY-2004) to the EMBL/GenBank/DDBJ databases.