

CD37 antibody - middle region
Rabbit Polyclonal Antibody
Catalog # AI14985**Specification**

CD37 antibody - middle region - Product Information

Application	WB
Primary Accession	P11049
Other Accession	NM_001040031 , NP_001035120
Reactivity	Human, Rat, Rabbit
Predicted	Human, Rabbit
Host	Rabbit
Clonality	Polyclonal
Calculated MW	24kDa kDa

CD37 antibody - middle region - Additional Information**Gene ID 951**Alias Symbol **GP52-40, MGC120234, TSPAN26****Other Names**

Leukocyte antigen CD37, Tetraspanin-26, Tspan-26, CD37, CD37, TSPAN26

Format

Liquid. Purified antibody supplied in 1x PBS buffer with 0.09% (w/v) sodium azide and 2% sucrose.

Reconstitution & Storage

Add 50 ul of distilled water. Final anti-CD37 antibody concentration is 1 mg/ml in PBS buffer with 2% sucrose. For longer periods of storage, store at 20°C. Avoid repeat freeze-thaw cycles.

Precautions

CD37 antibody - middle region is for research use only and not for use in diagnostic or therapeutic procedures.

CD37 antibody - middle region - Protein Information**Name** CD37**Synonyms** TSPAN26**Function**

Structural component of specialized membrane microdomains known as tetraspanin-enriched microdomains (TERMs), which act as platforms for receptor clustering and signaling. Participates thereby in diverse biological functions such as cell signal transduction, adhesion, migration and protein trafficking (PubMed:<[a href="http://www.uniprot.org/citations/22624718"](http://www.uniprot.org/citations/22624718)target="_blank">22624718). Upon ligand binding, two signaling pathways are activated, one acting through phosphorylation by LYN leading to cell death or a survival pathway with activation of GSK3B (PubMed:<[a href="http://www.uniprot.org/citations/22624718"](http://www.uniprot.org/citations/22624718)

target="_blank">22624718). Plays an essential role essential for clustering of integrin ITGA4/ITGB1 and promotes its mobility in the plasma membrane of B-cells. In turn, participates in ITGA4/ITGB1 integrin-mediated antiapoptotic signaling through AKT (By similarity). Also plays a role in the migration of dendritic cells and neutrophils to draining lymph nodes, as well as in their integrin-mediated adhesion (By similarity). Negatively regulates IL-6 responses through direct interaction with SOCS3 thereby preventing constitutive IL-6 signaling (PubMed:26784544). Alternatively, inhibition of IL-6 signaling can also occur via interaction and stabilization of DECTIN1/CLEC7A at the cell membrane to inhibit its ability to promote the production of IL-6 (PubMed:17182550).

Cellular Location

Cell membrane; Multi-pass membrane protein

Tissue Location

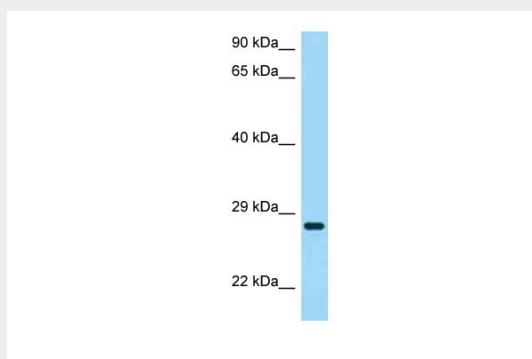
B-lymphocytes (PubMed:26784544). Antigen presenting cells (PubMed:17182550).

CD37 antibody - middle region - Protocols

Provided below are standard protocols that you may find useful for product applications.

- [Western Blot](#)
- [Blocking Peptides](#)
- [Dot Blot](#)
- [Immunohistochemistry](#)
- [Immunofluorescence](#)
- [Immunoprecipitation](#)
- [Flow Cytometry](#)
- [Cell Culture](#)

CD37 antibody - middle region - Images



WB Suggested Anti-CD37 Antibody Titration: 1.0 µg/ml
Positive Control: Hela Whole Cell