

EFNB3 antibody - C-terminal region
Rabbit Polyclonal Antibody
Catalog # AI15015**Specification**

EFNB3 antibody - C-terminal region - Product Information

Application	WB
Primary Accession	Q15768
Other Accession	NM_001406 , NP_001397
Reactivity	Human, Mouse, Rat, Rabbit, Horse, Bovine, Guinea Pig, Dog
Predicted	Human, Mouse, Rat, Pig, Horse, Bovine, Dog
Host	Rabbit
Clonality	Polyclonal
Calculated MW	33kDa kDa

EFNB3 antibody - C-terminal region - Additional Information**Gene ID** 1949

Alias Symbol	EFL6, EPLG8, LERK8
--------------	--------------------

Other Names

Ephrin-B3, EPH-related receptor transmembrane ligand ELK-L3, EPH-related receptor tyrosine kinase ligand 8, LERK-8, EFNB3, EPLG8, LERK8

Format

Liquid. Purified antibody supplied in 1x PBS buffer with 0.09% (w/v) sodium azide and 2% sucrose.

Reconstitution & Storage

Add 50 ul of distilled water. Final anti-EFNB3 antibody concentration is 1 mg/ml in PBS buffer with 2% sucrose. For longer periods of storage, store at 20°C. Avoid repeat freeze-thaw cycles.

Precautions

EFNB3 antibody - C-terminal region is for research use only and not for use in diagnostic or therapeutic procedures.

EFNB3 antibody - C-terminal region - Protein Information**Name** EFNB3**Synonyms** EPLG8, LERK8**Function**

Cell surface transmembrane ligand for Eph receptors, a family of receptor tyrosine kinases which are crucial for migration, repulsion and adhesion during neuronal, vascular and epithelial development. Binds promiscuously Eph receptors residing on adjacent cells, leading to contact-dependent bidirectional signaling into neighboring cells. The signaling pathway

downstream of the receptor is referred to as forward signaling while the signaling pathway downstream of the ephrin ligand is referred to as reverse signaling. May play a pivotal role in forebrain function. Binds to, and induce the collapse of, commissural axons/growth cones in vitro. May play a role in constraining the orientation of longitudinally projecting axons (By similarity).

Cellular Location

Membrane; Single-pass type I membrane protein.

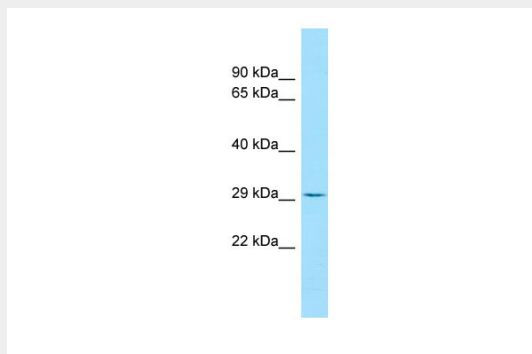
Tissue Location

Highly expressed in brain; expressed in embryonic floor plate, roof plate and hindbrain segments

EFNB3 antibody - C-terminal region - Protocols

Provided below are standard protocols that you may find useful for product applications.

- [Western Blot](#)
- [Blocking Peptides](#)
- [Dot Blot](#)
- [Immunohistochemistry](#)
- [Immunofluorescence](#)
- [Immunoprecipitation](#)
- [Flow Cytometry](#)
- [Cell Culture](#)

EFNB3 antibody - C-terminal region - Images

WB Suggested Anti-EFNB3 Antibody Titration: 1.0 µg/ml

Positive Control: U937 Whole Cell

EFNB3 antibody - C-terminal region - References

Cerretti D.P., et al. Submitted (JUL-1996) to the EMBL/GenBank/DDBJ databases.
Tang X.X., et al. Genomics 41:17-24(1997).
Gale N.W., et al. Oncogene 13:1343-1352(1996).
Ota T., et al. Nat. Genet. 36:40-45(2004).
Mural R.J., et al. Submitted (SEP-2005) to the EMBL/GenBank/DDBJ databases.