

**THEMIS antibody - C-terminal region**  
**Rabbit Polyclonal Antibody**  
**Catalog # AI15016**

**Specification**

---

**THEMIS antibody - C-terminal region - Product Information**

Application	WB
Primary Accession	<a href="#">Q8N1K5</a>
Other Accession	<a href="#">NM_001164687</a> , <a href="#">NP_001158159</a>
Reactivity	Human
Predicted	Human
Host	Rabbit
Clonality	Polyclonal
Calculated MW	66kDa KDa

**THEMIS antibody - C-terminal region - Additional Information**

**Gene ID** 387357

**Alias Symbol** C6orf190, C6orf207, FLJ40584, MGC163388, TSEPA, bA325O24.3, bA325O24.4, GASP, SPOT

**Other Names**

Protein THEMIS, Thymocyte-expressed molecule involved in selection, THEMIS, C6orf190, C6orf207

**Format**

Liquid. Purified antibody supplied in 1x PBS buffer with 0.09% (w/v) sodium azide and 2% sucrose.

**Reconstitution & Storage**

Add 50 ul of distilled water. Final anti-THEMIS antibody concentration is 1 mg/ml in PBS buffer with 2% sucrose. For longer periods of storage, store at 20°C. Avoid repeat freeze-thaw cycles.

**Precautions**

THEMIS antibody - C-terminal region is for research use only and not for use in diagnostic or therapeutic procedures.

**THEMIS antibody - C-terminal region - Protein Information**

**Name** THEMIS

**Synonyms** C6orf190, C6orf207

**Function**

Plays a central role in late thymocyte development by controlling both positive and negative T-cell selection. Required to sustain and/or integrate signals required for proper lineage commitment and maturation of T-cells. Regulates T-cell development through T-cell antigen receptor (TCR) signaling and in particular through the regulation of calcium influx and phosphorylation of Erk.

### Cellular Location

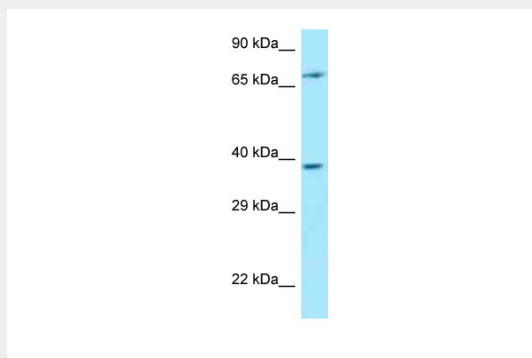
Cytoplasm {ECO:0000250|UniProtKB:Q8BGW0}. Nucleus {ECO:0000250|UniProtKB:Q8BGW0}

### THEMIS antibody - C-terminal region - Protocols

Provided below are standard protocols that you may find useful for product applications.

- [Western Blot](#)
- [Blocking Peptides](#)
- [Dot Blot](#)
- [Immunohistochemistry](#)
- [Immunofluorescence](#)
- [Immunoprecipitation](#)
- [Flow Cytometry](#)
- [Cell Culture](#)

### THEMIS antibody - C-terminal region - Images



WB Suggested Anti-THEMIS Antibody Titration: 1.0  $\mu$ g/ml  
Positive Control: Jurkat Whole Cell

### THEMIS antibody - C-terminal region - References

- Ota T., et al. Nat. Genet. 36:40-45(2004).  
Mungall A.J., et al. Nature 425:805-811(2003).  
Mural R.J., et al. Submitted (SEP-2005) to the EMBL/GenBank/DDBJ databases.  
Bechtel S., et al. BMC Genomics 8:399-399(2007).  
Brill L.M., et al. Anal. Chem. 76:2763-2772(2004).