

APOM antibody - C-terminal region
Rabbit Polyclonal Antibody
Catalog # AI15021**Specification**

APOM antibody - C-terminal region - Product Information

Application	WB
Primary Accession	O95445
Other Accession	NM_019101 , NP_061974
Reactivity	Human, Mouse, Rat, Rabbit, Pig, Horse, Bovine, Guinea Pig, Dog
Predicted	Human, Mouse, Rat, Pig, Bovine, Guinea Pig, Dog
Host	Rabbit
Clonality	Polyclonal
Calculated MW	21kDa KDa

APOM antibody - C-terminal region - Additional Information**Gene ID** 55937**Alias Symbol** G3a, HSPC336, MGC22400, NG20, apo-M
Other Names
Apolipoprotein M, Apo-M, ApoM, Protein G3a, APOM, G3A, NG20**Format**

Liquid. Purified antibody supplied in 1x PBS buffer with 0.09% (w/v) sodium azide and 2% sucrose.

Reconstitution & Storage

Add 50 ul of distilled water. Final anti-APOM antibody concentration is 1 mg/ml in PBS buffer with 2% sucrose. For longer periods of storage, store at 20°C. Avoid repeat freeze-thaw cycles.

Precautions

APOM antibody - C-terminal region is for research use only and not for use in diagnostic or therapeutic procedures.

APOM antibody - C-terminal region - Protein Information**Name** APOM**Synonyms** G3A, NG20**Function**

Probably involved in lipid transport. Can bind sphingosine-1- phosphate, myristic acid, palmitic acid and stearic acid, retinol, all- trans-retinoic acid and 9-cis-retinoic acid.

Cellular Location

Secreted. Note=Present in high density lipoprotein (HDL) and to a lesser extent in triglyceride-rich

lipoproteins (TGRLP) and low density lipoproteins (LDL)

Tissue Location

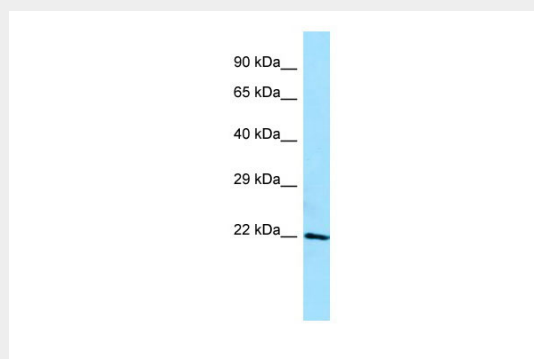
Plasma protein. Expressed in liver and kidney.

APOM antibody - C-terminal region - Protocols

Provided below are standard protocols that you may find useful for product applications.

- [Western Blot](#)
- [Blocking Peptides](#)
- [Dot Blot](#)
- [Immunohistochemistry](#)
- [Immunofluorescence](#)
- [Immunoprecipitation](#)
- [Flow Cytometry](#)
- [Cell Culture](#)

APOM antibody - C-terminal region - Images



WB Suggested Anti-APOM Antibody Titration: 1.0 µg/ml
Positive Control: ACHN Whole Cell

APOM antibody - C-terminal region - References

Xu N., et al. J. Biol. Chem. 274:31286-31290(1999).
Thomson W., et al. Submitted (JUL-1999) to the EMBL/GenBank/DDBJ databases.
Ye M., et al. Submitted (MAY-1999) to the EMBL/GenBank/DDBJ databases.
Shiina S., et al. Submitted (SEP-1999) to the EMBL/GenBank/DDBJ databases.
Xie T., et al. Genome Res. 13:2621-2636(2003).

APOM antibody - C-terminal region - Citations

- [Apolipoprotein M promotes cholesterol uptake and efflux from mouse macrophages](#)