

Bmp5 Antibody - C-terminal region
Rabbit Polyclonal Antibody
Catalog # AI15028**Specification**

Bmp5 Antibody - C-terminal region - Product Information

Application	WB
Primary Accession	D4A7P9
Other Accession	NM_001108168 , NP_001101638
Reactivity	Human, Mouse, Rat, Rabbit, Pig, Horse, Bovine, Guinea Pig, Dog
Predicted	Human, Mouse, Rat, Rabbit, Pig, Horse, Bovine, Guinea Pig, Dog
Host	Rabbit
Clonality	Polyclonal
Calculated MW	49kDa KDa

Bmp5 Antibody - C-terminal region - Additional Information**Format**

Liquid. Purified antibody supplied in 1x PBS buffer with 0.09% (w/v) sodium azide and 2% sucrose.

Reconstitution & Storage

Add 50 ul of distilled water. Final anti-Bmp5 antibody concentration is 1 mg/ml in PBS buffer with 2% sucrose. For longer periods of storage, store at 20°C. Avoid repeat freeze-thaw cycles.

Precautions

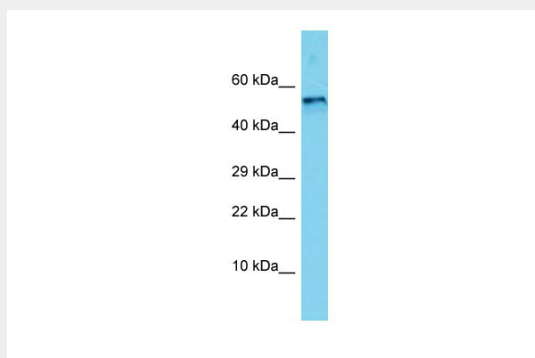
Bmp5 Antibody - C-terminal region is for research use only and not for use in diagnostic or therapeutic procedures.

Bmp5 Antibody - C-terminal region - Protein Information**Bmp5 Antibody - C-terminal region - Protocols**

Provided below are standard protocols that you may find useful for product applications.

- [Western Blot](#)
- [Blocking Peptides](#)
- [Dot Blot](#)
- [Immunohistochemistry](#)
- [Immunofluorescence](#)
- [Immunoprecipitation](#)
- [Flow Cytometry](#)
- [Cell Culture](#)

Bmp5 Antibody - C-terminal region - Images



Host: Rabbit
Target Name: Bmp5
Sample Tissue: Rat Brain lysates
Antibody Dilution: 1.0 μ g/ml