

ARTN antibody - middle region
Rabbit Polyclonal Antibody
Catalog # AI15037**Specification**

ARTN antibody - middle region - Product Information

Application	WB
Primary Accession	Q5T4W7
Other Accession	NM_057090 , NP_476431
Reactivity	Human
Predicted	Human
Host	Rabbit
Clonality	Polyclonal
Calculated MW	19kDa KDa

ARTN antibody - middle region - Additional Information**Gene ID** 9048**Alias Symbol** ENOVIN, EVN, NBN**Other Names**

Artemin, Enovin, Neublastin, ARTN, EVN

Format

Liquid. Purified antibody supplied in 1x PBS buffer with 0.09% (w/v) sodium azide and 2% sucrose.

Reconstitution & Storage

Add 50 ul of distilled water. Final anti-ARTN antibody concentration is 1 mg/ml in PBS buffer with 2% sucrose. For longer periods of storage, store at 20°C. Avoid repeat freeze-thaw cycles.

Precautions

ARTN antibody - middle region is for research use only and not for use in diagnostic or therapeutic procedures.

ARTN antibody - middle region - Protein Information**Name** ARTN {ECO:0000303|PubMed:9883723, ECO:0000312|HGNC:HGNC:727}**Function**

Growth factor that supports the survival of sensory and sympathetic peripheral neurons in culture and also supports the survival of dopaminergic neurons of the ventral mid-brain (PubMed:10583383, PubMed:9883723). Acts by binding to its coreceptor, GFRA3, leading to autophosphorylation and activation of the RET receptor (PubMed:31535977). Strong attractant of gut hematopoietic cells thus promoting the formation Peyer's patch-like structures, a major component of the gut-associated lymphoid tissue (By similarity).

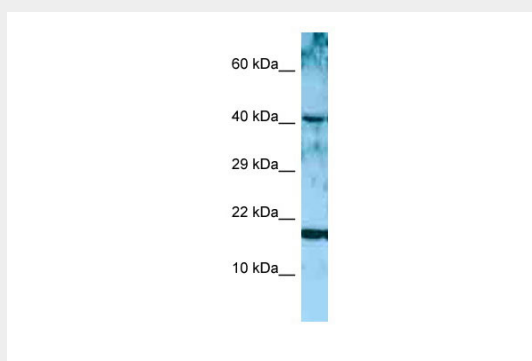
Cellular Location
Secreted.**Tissue Location**

Ubiquitous. Expressed at high levels in peripheral tissues including prostate, placenta, pancreas, heart, kidney, pituitary gland, lung and testis. Expressed at low levels in the brain

ARTN antibody - middle region - Protocols

Provided below are standard protocols that you may find useful for product applications.

- [Western Blot](#)
- [Blocking Peptides](#)
- [Dot Blot](#)
- [Immunohistochemistry](#)
- [Immunofluorescence](#)
- [Immunoprecipitation](#)
- [Flow Cytometry](#)
- [Cell Culture](#)

ARTN antibody - middle region - Images

WB Suggested Anti-ARTN Antibody Titration: 1.0 µg/ml
Positive Control: MCF7 Whole Cell