

RPL19 antibody - C-terminal region
Rabbit Polyclonal Antibody
Catalog # AI15079**Specification**

RPL19 antibody - C-terminal region - Product Information

Application	WB
Primary Accession	P84098
Other Accession	NM_000981 , NP_000972
Reactivity	Human, Mouse, Rat, Rabbit, Pig, Sheep, Horse, Yeast, Bovine, Guinea Pig, Dog
Predicted	Human, Mouse, Rabbit, Chicken, Horse, Guinea Pig
Host	Rabbit
Clonality	Polyclonal
Calculated MW	23kDa KDa

RPL19 antibody - C-terminal region - Additional Information**Gene ID** 6143**Alias Symbol** [DKFZp779D216](#), [FLJ27452](#), [MGC71997](#), [L19](#)
Other Names
60S ribosomal protein L19, RPL19**Format**

Liquid. Purified antibody supplied in 1x PBS buffer with 0.09% (w/v) sodium azide and 2% sucrose.

Reconstitution & Storage

Add 50 ul of distilled water. Final anti-RPL19 antibody concentration is 1 mg/ml in PBS buffer with 2% sucrose. For longer periods of storage, store at 20°C. Avoid repeat freeze-thaw cycles.

Precautions

RPL19 antibody - C-terminal region is for research use only and not for use in diagnostic or therapeutic procedures.

RPL19 antibody - C-terminal region - Protein Information**Name** RPL19**Function**Component of the large ribosomal subunit (PubMed: [23636399](http://www.uniprot.org/citations/23636399), PubMed: [32669547](http://www.uniprot.org/citations/32669547)). The ribosome is a large ribonucleoprotein complex responsible for the synthesis of proteins in the cell (PubMed: [23636399](http://www.uniprot.org/citations/23636399), PubMed: [32669547](http://www.uniprot.org/citations/32669547)).

Cellular Location

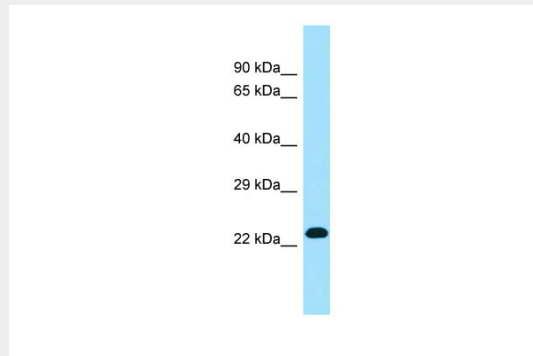
Cytoplasm.

RPL19 antibody - C-terminal region - Protocols

Provided below are standard protocols that you may find useful for product applications.

- [Western Blot](#)
- [Blocking Peptides](#)
- [Dot Blot](#)
- [Immunohistochemistry](#)
- [Immunofluorescence](#)
- [Immunoprecipitation](#)
- [Flow Cytometry](#)
- [Cell Culture](#)

RPL19 antibody - C-terminal region - Images



WB Suggested Anti-RPL19 Antibody Titration: 1.0 µg/ml

Positive Control: 293T Whole Cell

RPL19 is supported by BioGPS gene expression data to be expressed in HEK293T

RPL19 antibody - C-terminal region - References

- Kumabe T., et al. *Nucleic Acids Res.* 20:2598-2598(1992).
Henry J.L., et al. *Cancer Res.* 53:1403-1408(1993).
Ota T., et al. *Nat. Genet.* 36:40-45(2004).
Bechtel S., et al. *BMC Genomics* 8:399-399(2007).
Bienvenut W.V., et al. Submitted (MAR-2008) to UniProtKB.