

CYFIP1 Antibody - C-terminal region
Rabbit Polyclonal Antibody
Catalog # AI15116**Specification**

CYFIP1 Antibody - C-terminal region - Product Information

Application	WB
Primary Accession	Q7L576
Other Accession	NM_014608 , NP_055423
Reactivity	Human, Mouse, Rat, Rabbit, Goat, Horse, Bovine, Guinea Pig, Dog
Predicted	Human, Mouse, Rat, Rabbit, Pig, Goat, Horse, Bovine, Guinea Pig, Dog
Host	Rabbit
Clonality	Polyclonal
Calculated MW	145kDa KDa

CYFIP1 Antibody - C-terminal region - Additional Information**Gene ID** 23191**Alias Symbol** **FLJ45151, P140SRA-1, SHYC, SRA1****Other Names**

Cytoplasmic FMR1-interacting protein 1, Specifically Rac1-associated protein 1, Sra-1, p140sra-1, CYFIP1 (http://www.genenames.org/cgi-bin/gene_symbol_report?hgnc_id=13759)
HGNC:13759

Format

Liquid. Purified antibody supplied in 1x PBS buffer with 0.09% (w/v) sodium azide and 2% sucrose.

Reconstitution & Storage

Add 50 ul of distilled water. Final anti-CYFIP1 antibody concentration is 1 mg/ml in PBS buffer with 2% sucrose. For longer periods of storage, store at 20°C. Avoid repeat freeze-thaw cycles.

Precautions

CYFIP1 Antibody - C-terminal region is for research use only and not for use in diagnostic or therapeutic procedures.

CYFIP1 Antibody - C-terminal region - Protein Information**Name** CYFIP1 ([HGNC:13759](#))**Function**

Component of the CYFIP1-EIF4E-FMR1 complex which binds to the mRNA cap and mediates translational repression. In the CYFIP1-EIF4E-FMR1 complex this subunit is an adapter between EIF4E and FMR1. Promotes the translation repression activity of FMR1 in brain probably by mediating its association with EIF4E and mRNA (By similarity). Regulates formation of membrane ruffles and lamellipodia. Plays a role in axon outgrowth. Binds to F-actin but not to RNA. Part of the

WAVE complex that regulates actin filament reorganization via its interaction with the Arp2/3 complex. Actin remodeling activity is regulated by RAC1. Regulator of epithelial morphogenesis. As component of the WAVE1 complex, required for BDNF-NTRK2 endocytic trafficking and signaling from early endosomes (By similarity). May act as an invasion suppressor in cancers.

Cellular Location

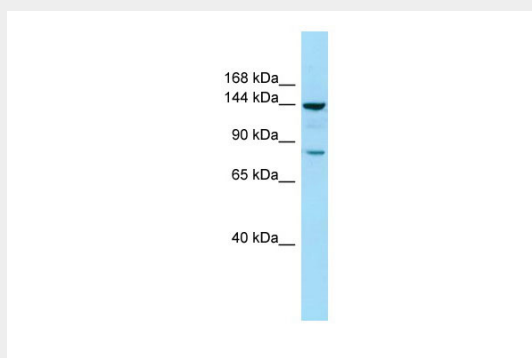
Cytoplasm {ECO:0000250|UniProtKB:Q7TMB8}. Cytoplasm, perinuclear region {ECO:0000250|UniProtKB:Q7TMB8}. Cell projection, lamellipodium {ECO:0000250|UniProtKB:Q7TMB8}. Cell projection, ruffle {ECO:0000250|UniProtKB:Q7TMB8}. Synapse, synaptosome {ECO:0000250|UniProtKB:Q7TMB8}. Note=Highly expressed in the perinuclear region (By similarity). Enriched in synaptosomes (By similarity). Also enriched in membrane ruffles and at the tips of lamellipodia (By similarity). {ECO:0000250|UniProtKB:Q7TMB8}

CYFIP1 Antibody - C-terminal region - Protocols

Provided below are standard protocols that you may find useful for product applications.

- [Western Blot](#)
- [Blocking Peptides](#)
- [Dot Blot](#)
- [Immunohistochemistry](#)
- [Immunofluorescence](#)
- [Immunoprecipitation](#)
- [Flow Cytometry](#)
- [Cell Culture](#)

CYFIP1 Antibody - C-terminal region - Images



WB Suggested Anti-CYFIP1 Antibody Titration: 1.0 µg/ml
Positive Control: COLO205 Whole Cell

CYFIP1 Antibody - C-terminal region - References

Jiang Y.-H.,et al.Submitted (SEP-2004) to the EMBL/GenBank/DDBJ databases.
Nomura N.,et al.DNA Res. 1:223-229(1994).
Ota T.,et al.Nat. Genet. 36:40-45(2004).
Mural R.J.,et al.Submitted (JUL-2005) to the EMBL/GenBank/DDBJ databases.
Bienvenut W.V.,et al.Submitted (JUL-2007) to UniProtKB.