

HTRA3 antibody - middle region
Rabbit Polyclonal Antibody
Catalog # AI15121**Specification**

HTRA3 antibody - middle region - Product Information

Application	WB
Primary Accession	P83110
Other Accession	NM_053044 , NP_444272
Reactivity	Human, Mouse, Rat, Horse, Guinea Pig, Dog
Predicted	Human, Mouse, Rat, Pig, Horse, Guinea Pig, Dog
Host	Rabbit
Clonality	Polyclonal
Calculated MW	47kDa KDa

HTRA3 antibody - middle region - Additional Information**Gene ID** 94031**Alias Symbol** Prsp, Tasp**Other Names**

Serine protease HTRA3, 3.4.21.-, High-temperature requirement factor A3, Pregnancy-related serine protease, HTRA3, PRSP

Format

Liquid. Purified antibody supplied in 1x PBS buffer with 0.09% (w/v) sodium azide and 2% sucrose.

Reconstitution & Storage

Add 50 ul of distilled water. Final anti-HTRA3 antibody concentration is 1 mg/ml in PBS buffer with 2% sucrose. For longer periods of storage, store at 20°C. Avoid repeat freeze-thaw cycles.

Precautions

HTRA3 antibody - middle region is for research use only and not for use in diagnostic or therapeutic procedures.

HTRA3 antibody - middle region - Protein Information**Name** HTRA3**Synonyms** PRSP**Function**

Serine protease that cleaves beta-casein/CSN2 as well as several extracellular matrix (ECM) proteoglycans such as decorin/DCN, biglycan/BGN and fibronectin/FN1. Inhibits signaling mediated by TGF- beta family proteins possibly indirectly by degradation of these ECM proteoglycans (By similarity). May act as a tumor suppressor. Negatively regulates, in vitro, trophoblast invasion

during placental development and may be involved in the development of the placenta in vivo. May also have a role in ovarian development, granulosa cell differentiation and luteinization (PubMed:21321049, PubMed:22229724).

Cellular Location

Secreted. Note=Secretion increased during decidualization of endometrial stromal cells

Tissue Location

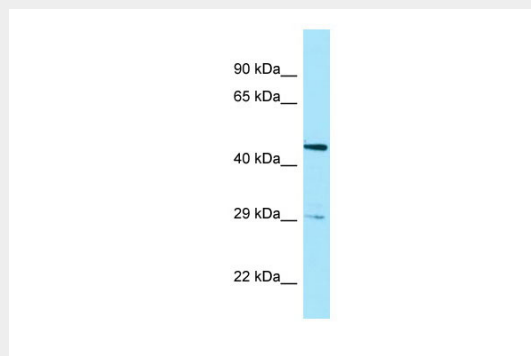
Widely expressed, with highest levels in both adult and fetal heart, ovary, uterus placenta, and bladder. In the endometrium, expressed in epithelial glands and the stroma. Also present in leukocytes. Isoform 1 is predominant in heart and skeletal muscle, whereas isoform 2 is predominant in placenta and kidney

HTRA3 antibody - middle region - Protocols

Provided below are standard protocols that you may find useful for product applications.

- [Western Blot](#)
- [Blocking Peptides](#)
- [Dot Blot](#)
- [Immunohistochemistry](#)
- [Immunofluorescence](#)
- [Immunoprecipitation](#)
- [Flow Cytometry](#)
- [Cell Culture](#)

HTRA3 antibody - middle region - Images



WB Suggested Anti-HTRA3 Antibody Titration: 1.0 µg/ml
Positive Control: Fetal Brain

HTRA3 antibody - middle region - References

Nie G.-Y., et al. Biochem. J. 371:39-48(2003).
Southan C., et al. Submitted (JUN-2002) to the EMBL/GenBank/DDBJ databases.
Hillier L.W., et al. Nature 434:724-731(2005).
Bowden M.A., et al. Gynecol. Oncol. 103:253-260(2006).
Narkiewicz J., et al. Oncol. Rep. 21:1529-1537(2009).