

**CABLES1 antibody - C-terminal region**  
**Rabbit Polyclonal Antibody**  
**Catalog # AI15153****Specification**

---

**CABLES1 antibody - C-terminal region - Product Information**

Application	WB
Primary Accession	<a href="#">Q8TDN4</a>
Other Accession	<a href="#">NM_138375</a> , <a href="#">NP_612384</a>
Reactivity	Human, Mouse, Rat, Rabbit, Pig, Horse, Bovine, Guinea Pig, Dog
Predicted	Human, Mouse, Rat, Rabbit, Pig, Horse, Bovine, Guinea Pig, Dog
Host	Rabbit
Clonality	Polyclonal
Calculated MW	42kDa KDa

**CABLES1 antibody - C-terminal region - Additional Information****Gene ID** 91768**Alias Symbol** CABLES, FLJ35924, HsT2563, IK3-1, CABL1  
**Other Names**  
CDK5 and ABL1 enzyme substrate 1, Interactor with CDK3 1, Ik3-1, CABLES1, CABLES**Format**

Liquid. Purified antibody supplied in 1x PBS buffer with 0.09% (w/v) sodium azide and 2% sucrose.

**Reconstitution & Storage**

Add 50 ul of distilled water. Final anti-CABLES1 antibody concentration is 1 mg/ml in PBS buffer with 2% sucrose. For longer periods of storage, store at 20°C. Avoid repeat freeze-thaw cycles.

**Precautions**

CABLES1 antibody - C-terminal region is for research use only and not for use in diagnostic or therapeutic procedures.

**CABLES1 antibody - C-terminal region - Protein Information****Name** CABLES1**Synonyms** CABLES**Function**

Cyclin-dependent kinase binding protein. Enhances cyclin- dependent kinase tyrosine phosphorylation by nonreceptor tyrosine kinases, such as that of CDK5 by activated ABL1, which leads to increased CDK5 activity and is critical for neuronal development, and that of CDK2 by WEE1, which leads to decreased CDK2 activity and growth inhibition. Positively affects neuronal outgrowth. Plays a role as a regulator for p53/p73-induced cell death (By similarity).

**Cellular Location**

Nucleus. Cytoplasm. Note=Located in the cell body and proximal region of the developing axonal shaft of immature neurons. Located in axonal growth cone, but not in the distal part of the axon shaft or in dendritic growth cone of mature neurons (By similarity).

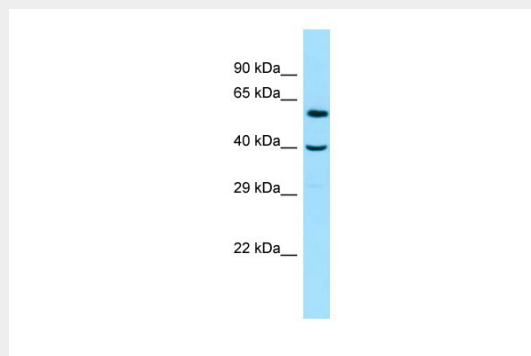
**Tissue Location**

Expressed in breast, pancreas, colon, head and neck (at protein level). Strongly decreased in more than half of cases of atypical endometrial hyperplasia and in more than 90% of endometrial cancers.

**CABLES1 antibody - C-terminal region - Protocols**

Provided below are standard protocols that you may find useful for product applications.

- [Western Blot](#)
- [Blocking Peptides](#)
- [Dot Blot](#)
- [Immunohistochemistry](#)
- [Immunofluorescence](#)
- [Immunoprecipitation](#)
- [Flow Cytometry](#)
- [Cell Culture](#)

**CABLES1 antibody - C-terminal region - Images**

WB Suggested Anti-CABLES1 Antibody Titration: 1.0 µg/ml  
Positive Control: RPMI-8226 Whole Cell

**CABLES1 antibody - C-terminal region - References**

Ota T., et al. Nat. Genet. 36:40-45(2004).  
Nusbaum C., et al. Nature 437:551-555(2005).  
Wu C.-L., et al. Cancer Res. 61:7325-7332(2001).  
Tsuji K., et al. J. Biol. Chem. 277:2951-2957(2002).  
Zukerberg L.R., et al. Cancer Res. 64:202-208(2004).