

CPOX Antibody - C-terminal region
Rabbit Polyclonal Antibody
Catalog # AI15175

Specification

CPOX Antibody - C-terminal region - Product Information

Application	WB
Primary Accession	P36551
Other Accession	NP_000088
Reactivity	Human
Host	Rabbit
Clonality	Polyclonal
Calculated MW	49kDa KDa

CPOX Antibody - C-terminal region - Additional Information

Gene ID 1371

Alias Symbol **CPOX, CPO, CPX,**

Other Names

Oxygen-dependent coproporphyrinogen-III oxidase, mitochondrial, COX, Coprogen oxidase, Coproporphyrinogenase, 1.3.3.3, CPOX, CPO, CPX

Format

Liquid. Purified antibody supplied in 1x PBS buffer with 0.09% (w/v) sodium azide and 2% sucrose.

Reconstitution & Storage

Add 50 μ l of distilled water. Final Anti-CPOX antibody concentration is 1 mg/ml in PBS buffer with 2% sucrose. For longer periods of storage, store at -20°C. Avoid repeat freeze-thaw cycles.

Precautions

CPOX Antibody - C-terminal region is for research use only and not for use in diagnostic or therapeutic procedures.

CPOX Antibody - C-terminal region - Protein Information

Name CPOX ([HGNC:2321](#))

Synonyms CPO, CPX

Function

Catalyzes the aerobic oxidative decarboxylation of propionate groups of rings A and B of coproporphyrinogen-III to yield the vinyl groups in protoporphyrinogen-IX and participates to the sixth step in the heme biosynthetic pathway.

Cellular Location

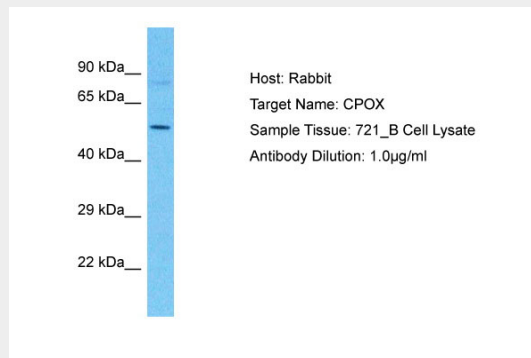
Mitochondrion intermembrane space {ECO:0000250|UniProtKB:Q3B7D0}

CPOX Antibody - C-terminal region - Protocols

Provided below are standard protocols that you may find useful for product applications.

- [Western Blot](#)
- [Blocking Peptides](#)
- [Dot Blot](#)
- [Immunohistochemistry](#)
- [Immunofluorescence](#)
- [Immunoprecipitation](#)
- [Flow Cytometry](#)
- [Cell Culture](#)

CPOX Antibody - C-terminal region - Images



Host: Rabbit
Target Name: CPOX
Sample Tissue: 721_B Whole cell lysate
s
Antibody Dilution: 1.0µg/ml

CPOX Antibody - C-terminal region - References

Delfau-Larue M.H., et al. Hum. Mol. Genet. 3:1325-1330(1994).
Ota T., et al. Nat. Genet. 36:40-45(2004).
Totoki Y., et al. Submitted (APR-2005) to the EMBL/GenBank/DDBJ databases.
Mural R.J., et al. Submitted (SEP-2005) to the EMBL/GenBank/DDBJ databases.
Taketani S., et al. Biochim. Biophys. Acta 1183:547-549(1994).