

INHBC antibody - N-terminal region
Rabbit Polyclonal Antibody
Catalog # AI15177**Specification**

INHBC antibody - N-terminal region - Product Information

| | |
|-------------------|---|
| Application | WB |
| Primary Accession | P55103 |
| Other Accession | NM_005538 , NP_005529 |
| Reactivity | Human, Horse |
| Predicted | Human, Horse |
| Host | Rabbit |
| Clonality | Polyclonal |
| Calculated MW | 13kDa KDa |

INHBC antibody - N-terminal region - Additional Information**Gene ID** 3626**Alias Symbol** **IHBC****Other Names**

Inhibin beta C chain, Activin beta-C chain, INHBC

Format

Liquid. Purified antibody supplied in 1x PBS buffer with 0.09% (w/v) sodium azide and 2% sucrose.

Reconstitution & Storage

Add 50 ul of distilled water. Final anti-INHBC antibody concentration is 1 mg/ml in PBS buffer with 2% sucrose. For longer periods of storage, store at 20°C. Avoid repeat freeze-thaw cycles.

Precautions

INHBC antibody - N-terminal region is for research use only and not for use in diagnostic or therapeutic procedures.

INHBC antibody - N-terminal region - Protein Information**Name** INHBC**Function**

Inhibins and activins inhibit and activate, respectively, the secretion of follitropin by the pituitary gland. Inhibins/activins are involved in regulating a number of diverse functions such as hypothalamic and pituitary hormone secretion, gonadal hormone secretion, germ cell development and maturation, erythroid differentiation, insulin secretion, nerve cell survival, embryonic axial development or bone growth, depending on their subunit composition. Inhibins appear to oppose the functions of activins.

Cellular Location

Secreted.

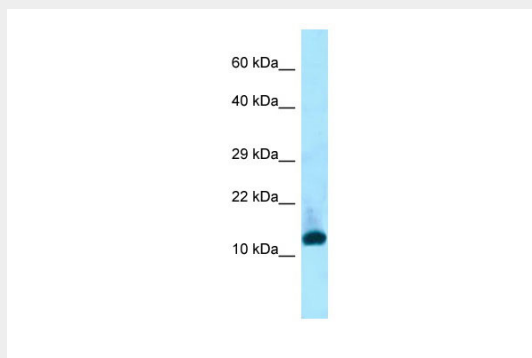
Tissue Location

Expressed in benign prostatic hyperplasia.

INHBC antibody - N-terminal region - Protocols

Provided below are standard protocols that you may find useful for product applications.

- [Western Blot](#)
- [Blocking Peptides](#)
- [Dot Blot](#)
- [Immunohistochemistry](#)
- [Immunofluorescence](#)
- [Immunoprecipitation](#)
- [Flow Cytometry](#)
- [Cell Culture](#)

INHBC antibody - N-terminal region - Images

Host: Rabbit

Target Name: INHBC

Antibody Dilution: 1.0µg/ml

Sample Tissue: OVCAR-3 cell lysate

INHBC is supported by BioGPS gene expression data to be expressed in OVCAR3

INHBC antibody - N-terminal region - References

Hoetten G.,et al.Biochem. Biophys. Res. Commun. 206:608-613(1995).

Mural R.J.,et al.Submitted (JUL-2005) to the EMBL/GenBank/DDBJ databases.

Thomas T.Z.,et al.Prostate 34:34-43(1998).