

PAM16 antibody - C-terminal region
Rabbit Polyclonal Antibody
Catalog # AI15195

Specification

PAM16 antibody - C-terminal region - Product Information

Application	WB
Primary Accession	O9Y3D7
Other Accession	NM_016069 , NP_057153
Reactivity	Human, Mouse, Rat, Pig, Dog
Predicted	Human, Mouse, Rat, Pig, Dog
Host	Rabbit
Clonality	Polyclonal
Calculated MW	14kDa KDa

PAM16 antibody - C-terminal region - Additional Information

Gene ID 51025

Alias Symbol CGI-136, Magmas

Other Names

Mitochondrial import inner membrane translocase subunit TIM16, Mitochondria-associated granulocyte macrophage CSF-signaling molecule, Presequence translocated-associated motor subunit PAM16, PAM16, MAGMAS, TIM16, TIMM16

Format

Liquid. Purified antibody supplied in 1x PBS buffer with 0.09% (w/v) sodium azide and 2% sucrose.

Reconstitution & Storage

Add 50 ul of distilled water. Final anti-PAM16 antibody concentration is 1 mg/ml in PBS buffer with 2% sucrose. For longer periods of storage, store at 20°C. Avoid repeat freeze-thaw cycles.

Precautions

PAM16 antibody - C-terminal region is for research use only and not for use in diagnostic or therapeutic procedures.

PAM16 antibody - C-terminal region - Protein Information

Name PAM16

Synonyms MAGMAS, TIM16, TIMM16

Function

Regulates ATP-dependent protein translocation into the mitochondrial matrix. Inhibits DNAJC19 stimulation of HSPA9/Mortalin ATPase activity.

Cellular Location

Mitochondrion inner membrane; Peripheral membrane protein; Matrix side

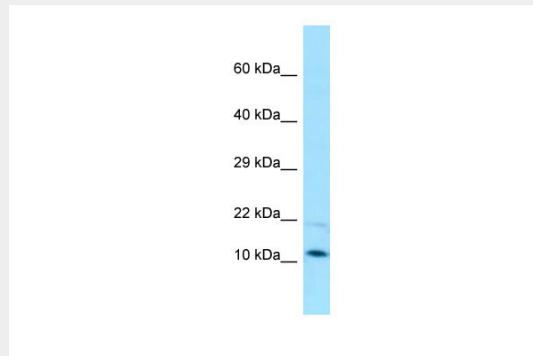
Tissue Location
Ubiquitously expressed.

PAM16 antibody - C-terminal region - Protocols

Provided below are standard protocols that you may find useful for product applications.

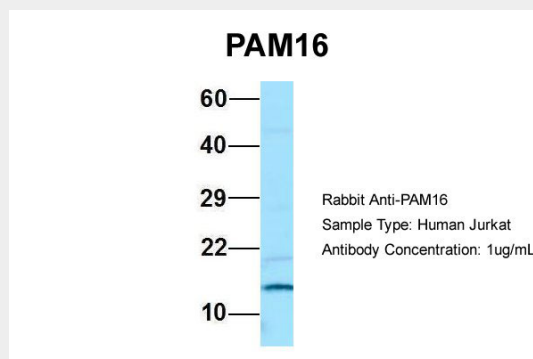
- [Western Blot](#)
- [Blocking Peptides](#)
- [Dot Blot](#)
- [Immunohistochemistry](#)
- [Immunofluorescence](#)
- [Immunoprecipitation](#)
- [Flow Cytometry](#)
- [Cell Culture](#)

PAM16 antibody - C-terminal region - Images



WB Suggested Anti-PAM16 Antibody Titration: 1.0 µg/ml

Positive Control: HepG2 Whole Cell PAM16 is supported by BioGPS gene expression data to be expressed in HepG2

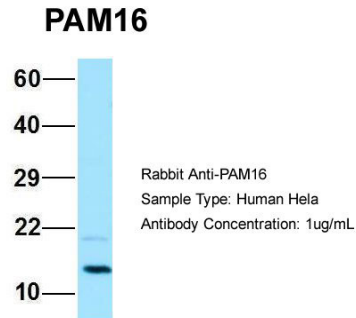


Host: Rabbit

Target Name: PAM16

Sample Tissue: Jurkat

Antibody Dilution: 1.0 µg/ml PAM16 is supported by BioGPS gene expression data to be expressed in Jurkat



Host:Rabbit

Target Name:PAM16

Sample Tissue:HeLa

Antibody Dilution: 1.0µg/ml PAM16 is supported by BioGPS gene expression data to be expressed in HeLa

PAM16 antibody - C-terminal region - References

Jubinsky P.T.,et al.Exp. Hematol. 29:1392-1402(2001).

Lai C.-H.,et al.Genome Res. 10:703-713(2000).

Ota T.,et al.Nat. Genet. 36:40-45(2004).

Ebert L.,et al.Submitted (JUN-2004) to the EMBL/GenBank/DDBJ databases.

Jubinsky P.T.,et al.J. Mol. Histol. 36:69-75(2005).