

FCER2 Antibody - C-terminal region
Rabbit Polyclonal Antibody
Catalog # AI15200**Specification**

FCER2 Antibody - C-terminal region - Product Information

Application	WB
Primary Accession	P06734
Other Accession	NM_002002 , NP_001993
Reactivity	Human
Predicted	Human
Host	Rabbit
Clonality	Polyclonal
Calculated MW	35kDa KDa

FCER2 Antibody - C-terminal region - Additional Information**Gene ID** 2208**Alias Symbol** **CD23, CD23A, CLEC4J, FCE2, IGEBF****Other Names**

Low affinity immunoglobulin epsilon Fc receptor, BLAST-2, C-type lectin domain family 4 member J, Fc-epsilon-R1I, Immunoglobulin E-binding factor, Lymphocyte IgE receptor, CD23, Low affinity immunoglobulin epsilon Fc receptor membrane-bound form, Low affinity immunoglobulin epsilon Fc receptor soluble form, FCER2, CD23A, CLEC4J, FCE2, IGEBF

Format

Liquid. Purified antibody supplied in 1x PBS buffer with 0.09% (w/v) sodium azide and 2% sucrose.

Reconstitution & Storage

Add 50 ul of distilled water. Final anti-FCER2 antibody concentration is 1 mg/ml in PBS buffer with 2% sucrose. For longer periods of storage, store at 20°C. Avoid repeat freeze-thaw cycles.

Precautions

FCER2 Antibody - C-terminal region is for research use only and not for use in diagnostic or therapeutic procedures.

FCER2 Antibody - C-terminal region - Protein Information**Name** FCER2**Synonyms** CD23A, CLEC4J, FCE2, IGEBF**Function**

Low-affinity receptor for immunoglobulin E (IgE) and CR2/CD21. Has essential roles in the regulation of IgE production and in the differentiation of B cells. On B cells, initiates IgE-dependent antigen uptake and presentation to T cells (PubMed:2167225). On

macrophages, upon IgE binding and antigen cross-linking induces intracellular killing of parasites through activation of L-Arginine- nitric oxide pathway (PubMed:7544003).

Cellular Location

Cell membrane; Single-pass type II membrane protein. Cell membrane; Lipid-anchor. Secreted.
Note=Also exists as a soluble excreted form, sCD23

Tissue Location

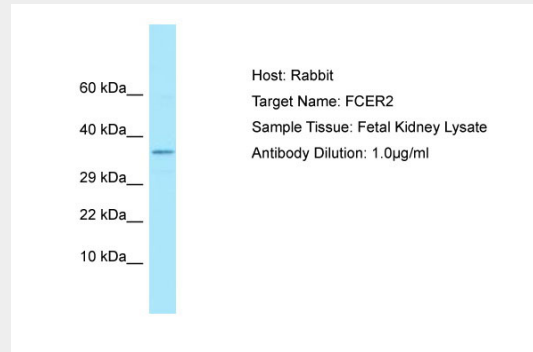
Detected in urine (at protein level).

FCER2 Antibody - C-terminal region - Protocols

Provided below are standard protocols that you may find useful for product applications.

- [Western Blot](#)
- [Blocking Peptides](#)
- [Dot Blot](#)
- [Immunohistochemistry](#)
- [Immunofluorescence](#)
- [Immunoprecipitation](#)
- [Flow Cytometry](#)
- [Cell Culture](#)

FCER2 Antibody - C-terminal region - Images



Host: Rabbit
Target Name: FCER2
Sample Tissue: Fetal Kidney lysates
Antibody Dilution: 1.0µg/ml

FCER2 Antibody - C-terminal region - References

Ikuta K.,et al.Proc. Natl. Acad. Sci. U.S.A. 84:819-823(1987).
Kikutani H.,et al.Cell 47:657-665(1986).
Luedin C.,et al.EMBO J. 6:109-114(1987).
Grimwood J.,et al.Nature 428:529-535(2004).
Yokota A.,et al.Cell 55:611-618(1988).