

NANS antibody - middle region
Rabbit Polyclonal Antibody
Catalog # AI15219**Specification**

NANS antibody - middle region - Product Information

Application	WB
Primary Accession	O9NR45
Other Accession	NM_018946 , NP_061819
Reactivity	Human, Mouse, Rat, Rabbit, Pig, Horse, Bovine, Guinea Pig, Dog
Predicted	Human, Mouse, Rat, Rabbit, Pig, Horse, Bovine, Guinea Pig, Dog
Host	Rabbit
Clonality	Polyclonal
Calculated MW	40kDa KDa

NANS antibody - middle region - Additional Information**Gene ID** 54187**Alias Symbol** SAS**Other Names**

Sialic acid synthase, N-acetylneuraminase synthase, 2.5.1.56, N-acetylneuraminase-9-phosphate synthase, 2.5.1.57, N-acetylneuraminic acid phosphate synthase, N-acetylneuraminic acid synthase, NANS, SAS

Format

Liquid. Purified antibody supplied in 1x PBS buffer with 0.09% (w/v) sodium azide and 2% sucrose.

Reconstitution & Storage

Add 50 ul of distilled water. Final anti-NANS antibody concentration is 1 mg/ml in PBS buffer with 2% sucrose. For longer periods of storage, store at 20°C. Avoid repeat freeze-thaw cycles.

Precautions

NANS antibody - middle region is for research use only and not for use in diagnostic or therapeutic procedures.

NANS antibody - middle region - Protein Information**Name** NANS**Synonyms** SAS**Function**

Produces N-acetylneuraminic acid (Neu5Ac) and 2-keto-3-deoxy- D-glycero-D-galacto-nononic acid (KDN) (PubMed:10749855, PubMed:<a href="http://www.uniprot.org/citations/27213289"

target="_blank">27213289). Can also use N-acetylmannosamine 6-phosphate and mannose 6-phosphate as substrates to generate phosphorylated forms of Neu5Ac and KDN, respectively (PubMed:10749855).

Tissue Location

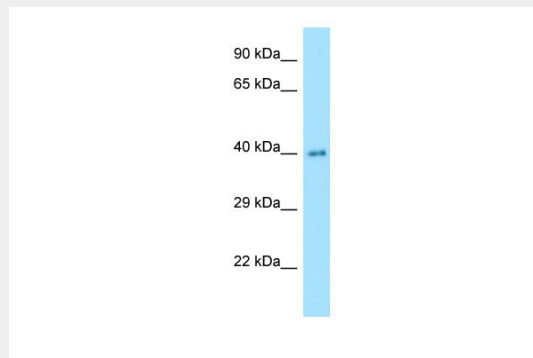
Ubiquitous..

NANS antibody - middle region - Protocols

Provided below are standard protocols that you may find useful for product applications.

- [Western Blot](#)
- [Blocking Peptides](#)
- [Dot Blot](#)
- [Immunohistochemistry](#)
- [Immunofluorescence](#)
- [Immunoprecipitation](#)
- [Flow Cytometry](#)
- [Cell Culture](#)

NANS antibody - middle region - Images



Host: Rabbit
Target Name: NANS
Antibody Dilution: 1.0µg/ml
Sample Tissue: Human Lung

NANS antibody - middle region - References

Lawrence S.M.,et al.J. Biol. Chem. 275:17869-17877(2000).
Ota T.,et al.Nat. Genet. 36:40-45(2004).
Humphray S.J.,et al.Nature 429:369-374(2004).
Mural R.J.,et al.Submitted (JUL-2005) to the EMBL/GenBank/DDBJ databases.
Bienvenut W.V.,et al.Submitted (JAN-2010) to UniProtKB.