

**GPR34 Antibody - C-terminal region**  
**Rabbit Polyclonal Antibody**  
**Catalog # AI15245****Specification**

---

**GPR34 Antibody - C-terminal region - Product Information**

Application	WB
Primary Accession	<a href="#">Q9UPC5</a>
Other Accession	<a href="#">NM_005300</a> , <a href="#">NP_005291</a>
Reactivity	Human, Mouse, Rat, Rabbit, Horse, Bovine, Guinea Pig, Dog
Predicted	Human, Mouse, Rat, Rabbit, Pig, Horse, Bovine, Guinea Pig, Dog
Host	Rabbit
Clonality	Polyclonal
Calculated MW	44kDa KDa

**GPR34 Antibody - C-terminal region - Additional Information****Gene ID** 2857**Other Names**

Probable G-protein coupled receptor 34, GPR34

**Format**

Liquid. Purified antibody supplied in 1x PBS buffer with 0.09% (w/v) sodium azide and 2% sucrose.

**Reconstitution & Storage**

Add 50 ul of distilled water. Final anti-GPR34 antibody concentration is 1 mg/ml in PBS buffer with 2% sucrose. For longer periods of storage, store at 20°C. Avoid repeat freeze-thaw cycles.

**Precautions**

GPR34 Antibody - C-terminal region is for research use only and not for use in diagnostic or therapeutic procedures.

**GPR34 Antibody - C-terminal region - Protein Information****Name** GPR34**Function**

G-protein-coupled receptor of lysophosphatidylserine (LysoPS) that plays different roles in immune response (PubMed: [16460680](http://www.uniprot.org/citations/16460680)). Acts a damage-sensing receptor that triggers tissue repair upon recognition of dying neutrophils (By similarity). Mechanistically, apoptotic neutrophils release lysophosphatidylserine that are recognized by type 3 innate lymphoid cells (ILC3s) via GPR34, which activates downstream PI3K-AKT and RAS-ERK signaling pathways leading to STAT3 activation and IL-22 production (By similarity). Plays an important role in microglial function, controlling morphology and phagocytosis (By similarity).

**Cellular Location**

Cell membrane; Multi-pass membrane protein

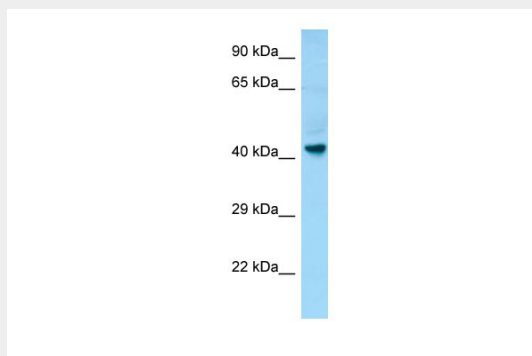
**Tissue Location**

Broadly expressed. Highly expressed on mast cells (PubMed:16460680).

**GPR34 Antibody - C-terminal region - Protocols**

Provided below are standard protocols that you may find useful for product applications.

- [Western Blot](#)
- [Blocking Peptides](#)
- [Dot Blot](#)
- [Immunohistochemistry](#)
- [Immunofluorescence](#)
- [Immunoprecipitation](#)
- [Flow Cytometry](#)
- [Cell Culture](#)

**GPR34 Antibody - C-terminal region - Images**

WB Suggested Anti-GPR34 Antibody Titration: 1.0 µg/ml

Positive Control: Fetal Brain

**GPR34 Antibody - C-terminal region - References**

Schoneberg T., et al. *Biochim. Biophys. Acta* 1446:57-70(1999).

Marchese A., et al. *Genomics* 56:12-21(1999).

Jacobi F.K., et al. *Hum. Genet.* 107:89-91(2000).

Ota T., et al. *Nat. Genet.* 36:40-45(2004).