

DYNC1LI1 Antibody - C-terminal region
Rabbit Polyclonal Antibody
Catalog # AI15268**Specification**

DYNC1LI1 Antibody - C-terminal region - Product Information

Application	WB
Primary Accession	O9Y6G9
Other Accession	NM_016141 , NP_057225
Reactivity	Human, Mouse, Rat, Rabbit, Pig, Horse, Bovine, Guinea Pig, Dog
Predicted	Human, Mouse, Rat, Rabbit, Pig, Horse, Bovine, Guinea Pig, Dog
Host	Rabbit
Clonality	Polyclonal
Calculated MW	56kDa KDa

DYNC1LI1 Antibody - C-terminal region - Additional Information**Gene ID** 51143**Alias Symbol** DNCLI1, FLJ10219**Other Names**

Cytoplasmic dynein 1 light intermediate chain 1, LIC1, Dynein light chain A, DLC-A, Dynein light intermediate chain 1, cytosolic, DYNC1LI1, DNCLI1

Format

Liquid. Purified antibody supplied in 1x PBS buffer with 0.09% (w/v) sodium azide and 2% sucrose.

Reconstitution & Storage

Add 50 ul of distilled water. Final anti-DYNC1LI1 antibody concentration is 1 mg/ml in PBS buffer with 2% sucrose. For longer periods of storage, store at 20°C. Avoid repeat freeze-thaw cycles.

Precautions

DYNC1LI1 Antibody - C-terminal region is for research use only and not for use in diagnostic or therapeutic procedures.

DYNC1LI1 Antibody - C-terminal region - Protein Information**Name** DYNC1LI1**Synonyms** DNCLI1**Function**

Acts as one of several non-catalytic accessory components of the cytoplasmic dynein 1 complex that are thought to be involved in linking dynein to cargos and to adapter proteins that regulate dynein function. Cytoplasmic dynein 1 acts as a motor for the intracellular retrograde motility of vesicles and organelles along microtubules. May play a role in binding dynein to membranous

organelles or chromosomes. Probably involved in the microtubule-dependent transport of pericentrin. Is required for progress through the spindle assembly checkpoint. The phosphorylated form appears to be involved in the selective removal of MAD1L1 and MAD1L2 but not BUB1B from kinetochores. Forms a functional Rab11/RAB11FIP3/dynein complex onto endosomal membrane that regulates the movement of peripheral sorting endosomes (SE) along microtubule tracks toward the microtubule organizing center/centrosome, generating the endosomal recycling compartment (ERC) (PubMed:20026645).

Cellular Location

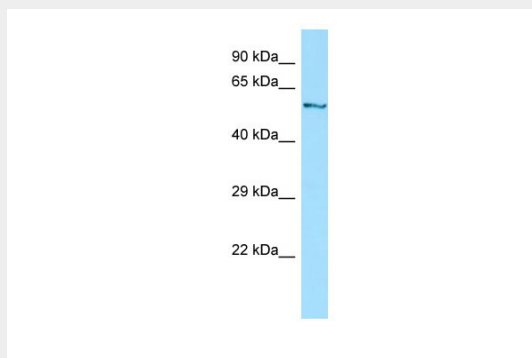
Cytoplasm. Chromosome, centromere, kinetochore. Cytoplasm, cytoskeleton, spindle pole. Recycling endosome membrane. Note=During interphase, localized in vesicles continuously moving from peripheral sorting endosomes in the cell towards the pericentrosomal endosomal recycling compartment (ERC)

DYNC1LI1 Antibody - C-terminal region - Protocols

Provided below are standard protocols that you may find useful for product applications.

- [Western Blot](#)
- [Blocking Peptides](#)
- [Dot Blot](#)
- [Immunohistochemistry](#)
- [Immunofluorescence](#)
- [Immunoprecipitation](#)
- [Flow Cytometry](#)
- [Cell Culture](#)

DYNC1LI1 Antibody - C-terminal region - Images



WB Suggested Anti-DYNC1LI1 Antibody Titration: 1.0 µg/ml
Positive Control: Jurkat Whole Cell

DYNC1LI1 Antibody - C-terminal region - References

Dai M.,et al.Submitted (JUL-1998) to the EMBL/GenBank/DDBJ databases.
Suzuki Y.,et al.Submitted (APR-2005) to the EMBL/GenBank/DDBJ databases.
Mural R.J.,et al.Submitted (JUL-2005) to the EMBL/GenBank/DDBJ databases.
Olsen J.V.,et al.Cell 127:635-648(2006).
Beausoleil S.A.,et al.Nat. Biotechnol. 24:1285-1292(2006).