

**NCLN Antibody - C-terminal region**  
**Rabbit Polyclonal Antibody**  
**Catalog # AI15314****Specification**

---

**NCLN Antibody - C-terminal region - Product Information**

Application	WB
Primary Accession	<a href="#">O969V3</a>
Other Accession	<a href="#">NM_020170</a> , <a href="#">NP_064555</a>
Reactivity	Human, Mouse, Rat, Pig, Bovine, Guinea Pig, Dog
Predicted	Human, Mouse, Rat, Pig, Bovine, Guinea Pig, Dog
Host	Rabbit
Clonality	Polyclonal
Calculated MW	59kDa kDa

**NCLN Antibody - C-terminal region - Additional Information****Gene ID** 56926

Alias Symbol	NET59
<b>Other Names</b>	
Nicalin, Nicastrin-like protein, NCLN	

**Format**

Liquid. Purified antibody supplied in 1x PBS buffer with 0.09% (w/v) sodium azide and 2% sucrose.

**Reconstitution & Storage**

Add 50 ul of distilled water. Final anti-NCLN antibody concentration is 1 mg/ml in PBS buffer with 2% sucrose. For longer periods of storage, store at 20°C. Avoid repeat freeze-thaw cycles.

**Precautions**

NCLN Antibody - C-terminal region is for research use only and not for use in diagnostic or therapeutic procedures.

**NCLN Antibody - C-terminal region - Protein Information****Name** NCLN {ECO:0000303|PubMed:36261522, ECO:0000312|HGNC:HGNC:26923}**Function**Component of the multi-pass translocon (MPT) complex that mediates insertion of multi-pass membrane proteins into the lipid bilayer of membranes (PubMed: [32820719](http://www.uniprot.org/citations/32820719), PubMed: [36261522](http://www.uniprot.org/citations/36261522)). The MPT complex takes over after the SEC61 complex: following membrane insertion of the first few transmembrane segments of proteins by the SEC61 complex, the MPT complex occludes the lateral gate of the SEC61 complex to promote insertion of subsequent transmembrane regions

(PubMed:<a href="http://www.uniprot.org/citations/36261522" target="\_blank">36261522</a>).  
May antagonize Nodal signaling and subsequent organization of axial structures during mesodermal patterning, via its interaction with NOMO (By similarity).

#### Cellular Location

Endoplasmic reticulum membrane; Single-pass membrane protein

#### Tissue Location

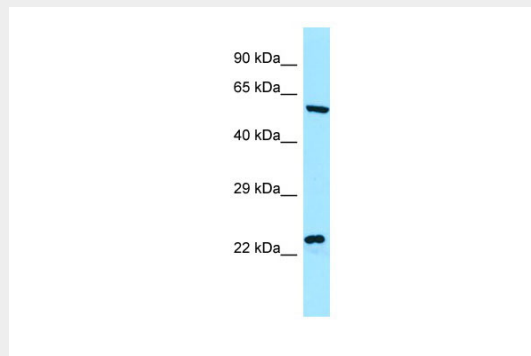
Highly expressed in pancreas and skeletal muscle and, at lower levels, in heart.

### NCLN Antibody - C-terminal region - Protocols

Provided below are standard protocols that you may find useful for product applications.

- [Western Blot](#)
- [Blocking Peptides](#)
- [Dot Blot](#)
- [Immunohistochemistry](#)
- [Immunofluorescence](#)
- [Immunoprecipitation](#)
- [Flow Cytometry](#)
- [Cell Culture](#)

### NCLN Antibody - C-terminal region - Images



WB Suggested Anti-NCLN Antibody Titration: 1.0 µg/ml  
Positive Control: ACHN Whole Cell

### NCLN Antibody - C-terminal region - References

- Ota T., et al. Nat. Genet. 36:40-45(2004).  
Grimwood J., et al. Nature 428:529-535(2004).  
Mural R.J., et al. Submitted (SEP-2005) to the EMBL/GenBank/DDBJ databases.  
Wiemann S., et al. Genome Res. 11:422-435(2001).  
Ebert L., et al. Submitted (JUN-2004) to the EMBL/GenBank/DDBJ databases.