

**MYCT1 Antibody - middle region**  
**Rabbit Polyclonal Antibody**  
**Catalog # AI15338****Specification**

---

**MYCT1 Antibody - middle region - Product Information**

Application	WB
Primary Accession	<a href="#">Q8N699</a>
Other Accession	<a href="#">NM_025107</a> , <a href="#">NP_079383</a>
Reactivity	Human, Mouse, Rat, Rabbit, Pig, Horse, Bovine, Guinea Pig, Dog
Predicted	Human, Mouse, Rat, Rabbit, Pig, Horse, Bovine, Guinea Pig, Dog
Host	Rabbit
Clonality	Polyclonal
Calculated MW	26kDa kDa

**MYCT1 Antibody - middle region - Additional Information****Gene ID** 80177**Alias Symbol** **FLJ21269, MGC156309, MGC156310, MTLC**  
**Other Names**  
Myc target protein 1, Myc target in myeloid cells protein 1, MYCT1, MTLC, MTMC1**Format**

Liquid. Purified antibody supplied in 1x PBS buffer with 0.09% (w/v) sodium azide and 2% sucrose.

**Reconstitution & Storage**

Add 50 ul of distilled water. Final anti-MYCT1 antibody concentration is 1 mg/ml in PBS buffer with 2% sucrose. For longer periods of storage, store at 20°C. Avoid repeat freeze-thaw cycles.

**Precautions**

MYCT1 Antibody - middle region is for research use only and not for use in diagnostic or therapeutic procedures.

**MYCT1 Antibody - middle region - Protein Information****Name** MYCT1**Synonyms** MTLC, MTMC1**Function**

May regulate certain MYC target genes, MYC seems to be a direct upstream transcriptional activator. Does not seem to significantly affect growth cell capacity. Overexpression seems to mediate many of the known phenotypic features associated with MYC, including promotion of apoptosis, alteration of morphology, enhancement of anchorage-independent growth, tumorigenic conversion, promotion of genomic instability, and inhibition of hematopoietic differentiation (By

similarity).

**Cellular Location**

Nucleus. Note=Expressed in nuclei of hepatocellular carcinoma cell line BEL-7402 cells

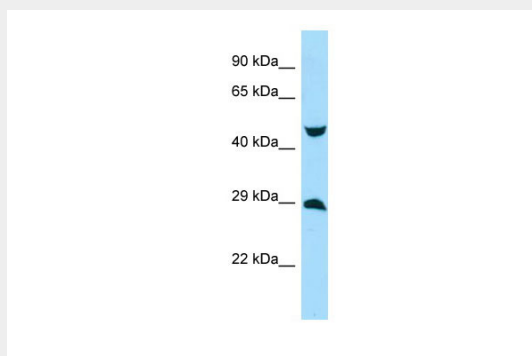
**Tissue Location**

Down-regulated in gastric cancer tissues.

**MYCT1 Antibody - middle region - Protocols**

Provided below are standard protocols that you may find useful for product applications.

- [Western Blot](#)
- [Blocking Peptides](#)
- [Dot Blot](#)
- [Immunohistochemistry](#)
- [Immunofluorescence](#)
- [Immunoprecipitation](#)
- [Flow Cytometry](#)
- [Cell Culture](#)

**MYCT1 Antibody - middle region - Images**

WB Suggested Anti-MYCT1 Antibody Titration: 1.0 µg/ml  
Positive Control: ACHN Whole Cell

**MYCT1 Antibody - middle region - References**

Qiu G.-B., et al. Zhonghua Yi Xue Yi Chuan Xue Za Zhi 20:94-97(2003).  
Ota T., et al. Nat. Genet. 36:40-45(2004).  
Mungall A.J., et al. Nature 425:805-811(2003).  
Mural R.J., et al. Submitted (SEP-2005) to the EMBL/GenBank/DDBJ databases.  
Bechtel S., et al. BMC Genomics 8:399-399(2007).