

Spaca3 Antibody - C-terminal region
Rabbit Polyclonal Antibody
Catalog # AI15352**Specification**

Spaca3 Antibody - C-terminal region - Product Information

Application	WB
Primary Accession	Q9D9X8
Reactivity	Human, Mouse, Rat, Rabbit, Pig, Goat, Sheep, Horse, Bovine, Dog
Predicted	Human, Mouse, Rat, Rabbit, Pig, Goat, Sheep, Horse, Bovine, Dog
Host	Rabbit
Clonality	Polyclonal
Calculated MW	24kDa kDa

Spaca3 Antibody - C-terminal region - Additional Information**Gene ID** 75622**Other Names**

Sperm acrosome membrane-associated protein 3, Lysozyme-like protein 3, Sperm lysozyme-like protein 1, mSLLP1, Sperm acrosome membrane-associated protein 3, membrane form, Sperm acrosome membrane-associated protein 3, processed form, Spaca3, Lyc3, Lyzl3, Sllp1

Format

Liquid. Purified antibody supplied in 1x PBS buffer with 0.09% (w/v) sodium azide and 2% sucrose.

Reconstitution & Storage

Add 50 ul of distilled water. Final anti-Spaca3 antibody concentration is 1 mg/ml in PBS buffer with 2% sucrose. For longer periods of storage, store at 20°C. Avoid repeat freeze-thaw cycles.

Precautions

Spaca3 Antibody - C-terminal region is for research use only and not for use in diagnostic or therapeutic procedures.

Spaca3 Antibody - C-terminal region - Protein Information**Name** Spaca3**Synonyms** Lyc3, Lyzl3, Sllp1**Function**

Sperm surface membrane protein that may be involved in sperm- egg plasma membrane adhesion and fusion during fertilization. It could be a potential receptor for the egg oligosaccharide residue N- acetylglucosamine, which is present in the extracellular matrix over the egg plasma membrane. The processed form has no detectable bacteriolytic activity in vitro (By similarity).

Cellular Location

Cytoplasmic vesicle, secretory vesicle, acrosome membrane; Single-pass type II membrane protein. Note=Anterior acrosome in non- capacitated spermatozoa and retained in the equatorial segment and in the luminal face of both the inner and outer acrosomal membranes following capacitation and the acrosome reaction

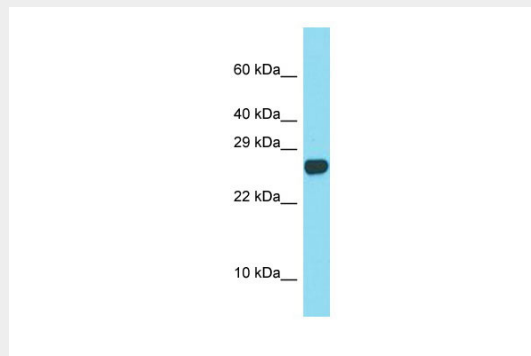
Tissue Location

The processed form is expressed in sperm (at protein level). Expressed strongly in testis and epididymis and weakly in pancreas.

Spaca3 Antibody - C-terminal region - Protocols

Provided below are standard protocols that you may find useful for product applications.

- [Western Blot](#)
- [Blocking Peptides](#)
- [Dot Blot](#)
- [Immunohistochemistry](#)
- [Immunofluorescence](#)
- [Immunoprecipitation](#)
- [Flow Cytometry](#)
- [Cell Culture](#)

Spaca3 Antibody - C-terminal region - Images

Host: Rabbit

Target Name: Spaca3

Sample Tissue: Mouse Spleen lysates

Antibody Dilution: 1.0µg/ml

Spaca3 Antibody - C-terminal region - References

Zhang K.,et al.Biol. Reprod. 73:1064-1071(2005).
Carninci P.,et al.Science 309:1559-1563(2005).
Church D.M.,et al.PLoS Biol. 7:E1000112-E1000112(2009).
Herrero M.B.,et al.Dev. Biol. 284:126-142(2005).
Sachdev M.,et al.Dev. Biol. 363:40-51(2012).