

TOP1MT Antibody - C-terminal region
Rabbit Polyclonal Antibody
Catalog # AI15353**Specification**

TOP1MT Antibody - C-terminal region - Product Information

Application	WB
Primary Accession	O969P6
Other Accession	NM_052963 , NP_443195
Reactivity	Human, Mouse, Rat, Rabbit, Pig, Horse, Yeast, Bovine, Guinea Pig, Dog
Predicted	Human, Mouse, Rat, Rabbit, Pig, Horse, Yeast, Bovine, Guinea Pig, Dog
Host	Rabbit
Clonality	Polyclonal
Calculated MW	70kDa KDa

TOP1MT Antibody - C-terminal region - Additional Information**Gene ID** 116447**Other Names**

DNA topoisomerase I, mitochondrial, TOP1mt, 5.99.1.2, TOP1MT

Format

Liquid. Purified antibody supplied in 1x PBS buffer with 0.09% (w/v) sodium azide and 2% sucrose.

Reconstitution & Storage

Add 50 ul of distilled water. Final anti-TOP1MT antibody concentration is 1 mg/ml in PBS buffer with 2% sucrose. For longer periods of storage, store at 20°C. Avoid repeat freeze-thaw cycles.

Precautions

TOP1MT Antibody - C-terminal region is for research use only and not for use in diagnostic or therapeutic procedures.

TOP1MT Antibody - C-terminal region - Protein Information**Name** TOP1MT**Function**

Releases the supercoiling and torsional tension of DNA introduced during duplication of mitochondrial DNA by transiently cleaving and rejoining one strand of the DNA duplex. Introduces a single-strand break via transesterification at a target site in duplex DNA. The scissile phosphodiester is attacked by the catalytic tyrosine of the enzyme, resulting in the formation of a DNA-(3'-phosphotyrosyl)- enzyme intermediate and the expulsion of a 5'-OH DNA strand. The free DNA strand then rotates around the intact phosphodiester bond on the opposing strand, thus removing DNA supercoils. Finally, in the religation step, the DNA 5'-OH attacks the covalent intermediate to expel the active-site tyrosine and restore the DNA phosphodiester backbone (By

similarity).

Cellular Location

Mitochondrion.

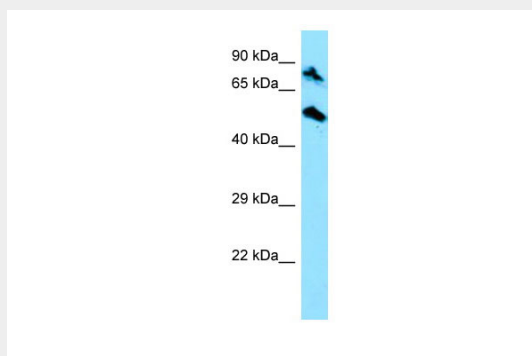
Tissue Location

Ubiquitous; highest in skeletal muscle, heart, brain and fetal liver.

TOP1MT Antibody - C-terminal region - Protocols

Provided below are standard protocols that you may find useful for product applications.

- [Western Blot](#)
- [Blocking Peptides](#)
- [Dot Blot](#)
- [Immunohistochemistry](#)
- [Immunofluorescence](#)
- [Immunoprecipitation](#)
- [Flow Cytometry](#)
- [Cell Culture](#)

TOP1MT Antibody - C-terminal region - Images

WB Suggested Anti-TOP1MT Antibody Titration: 1.0 µg/ml

Positive Control: HepG2 Whole Cell

TOP1MT Antibody - C-terminal region - References

Zhang H., et al. Proc. Natl. Acad. Sci. U.S.A. 98:10608-10613(2001).

Ota T., et al. Nat. Genet. 36:40-45(2004).

Nusbaum C., et al. Nature 439:331-335(2006).