

SMTNL1 Antibody - N-terminal region
Rabbit Polyclonal Antibody
Catalog # AI15379**Specification**

SMTNL1 Antibody - N-terminal region - Product Information

Application	WB
Primary Accession	A8MU46
Reactivity	Human, Pig, Yeast, Dog
Predicted	Human, Pig, Yeast, Dog
Host	Rabbit
Clonality	Polyclonal
Calculated MW	50kDa KDa

SMTNL1 Antibody - N-terminal region - Additional Information**Gene ID** 219537**Other Names**

Smoothelin-like protein 1, SMTNL1

Format

Liquid. Purified antibody supplied in 1x PBS buffer with 0.09% (w/v) sodium azide and 2% sucrose.

Reconstitution & Storage

Add 50 μ l of distilled water. Final Anti-SMTNL1 antibody concentration is 1 mg/ml in PBS buffer with 2% sucrose. For longer periods of storage, store at -20°C. Avoid repeat freeze-thaw cycles.

Precautions

SMTNL1 Antibody - N-terminal region is for research use only and not for use in diagnostic or therapeutic procedures.

SMTNL1 Antibody - N-terminal region - Protein Information**Name** SMTNL1**Function**

Plays a role in the regulation of contractile properties of both striated and smooth muscles. When unphosphorylated, may inhibit myosin dephosphorylation. Phosphorylation at Ser-299 reduces this inhibitory activity (By similarity).

Cellular Location

Cytoplasm, myofibril. Cytoplasm, myofibril, sarcomere, I band. Cytoplasm, myofibril, sarcomere, M line Nucleus. Note=Colocalizes with MYH2. In its unphosphorylated state, localizes to the cytoplasm (By similarity) Phosphorylation at Ser-301 promotes translocation to the nucleus (By similarity).

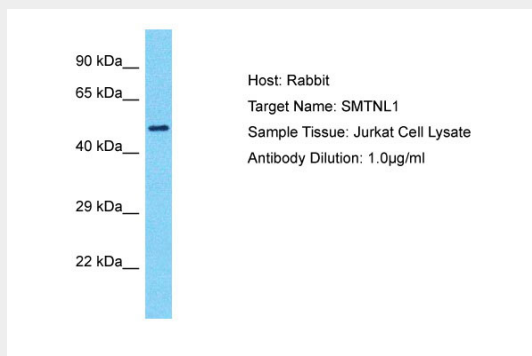
Tissue Location

Expressed in striated muscles, specifically in type 2a fibers (at protein level).

SMTNL1 Antibody - N-terminal region - Protocols

Provided below are standard protocols that you may find useful for product applications.

- [Western Blot](#)
- [Blocking Peptides](#)
- [Dot Blot](#)
- [Immunohistochemistry](#)
- [Immunofluorescence](#)
- [Immunoprecipitation](#)
- [Flow Cytometry](#)
- [Cell Culture](#)

SMTNL1 Antibody - N-terminal region - Images

Host: Rabbit
Target Name: SMTNL1
Sample Tissue: Jurkat Whole cell lysate
s
Antibody Dilution: 1.0µg/ml

SMTNL1 Antibody - N-terminal region - References

Taylor T.D.,et al.Nature 440:497-500(2006).
Wooldridge A.A.,et al.J. Biol. Chem. 283:11850-11859(2008).
Lontay B.,et al.J. Biol. Chem. 285:29357-29366(2010).