

**ANKFY1 Antibody - C-terminal region**  
**Rabbit Polyclonal Antibody**  
**Catalog # AI15383****Specification**

---

**ANKFY1 Antibody - C-terminal region - Product Information**

Application	WB
Primary Accession	<a href="#">O9P2R3</a>
Other Accession	<a href="#">NM_020740</a> , <a href="#">NP_065791</a>
Reactivity	Human
Host	Rabbit
Clonality	Polyclonal
Calculated MW	54kDa KDa

**ANKFY1 Antibody - C-terminal region - Additional Information****Gene ID** 51479**Alias Symbol** ANKHZN, DKFZp686M19106, KIAA1255, ZFYVE14**Other Names**

Rabankyrin-5, Rank-5, Ankyrin repeat and FYVE domain-containing protein 1, Ankyrin repeats hooked to a zinc finger motif, ANKFY1, ANKHZN, KIAA1255

**Format**

Liquid. Purified antibody supplied in 1x PBS buffer with 0.09% (w/v) sodium azide and 2% sucrose.

**Reconstitution & Storage**

Add 50 ul of distilled water. Final anti-ANKFY1 antibody concentration is 1 mg/ml in PBS buffer with 2% sucrose. For longer periods of storage, store at 20°C. Avoid repeat freeze-thaw cycles.

**Precautions**

ANKFY1 Antibody - C-terminal region is for research use only and not for use in diagnostic or therapeutic procedures.

**ANKFY1 Antibody - C-terminal region - Protein Information****Name** ANKFY1**Synonyms** ANKHZN, KIAA1255**Function**

Proposed effector of Rab5. Binds to phosphatidylinositol 3- phosphate (PI(3)P). Involved in homotypic early endosome fusion and to a lesser extent in heterotypic fusion of clathrin-coated vesicles with early endosomes. Involved in macropinocytosis; the function is dependent on Rab5-GTP. Required for correct endosomal localization. Involved in the internalization and trafficking of activated tyrosine kinase receptors such as PDGFRB. Regulates the subcellular localization of the retromer complex in a EHD1-dependent manner. Involved in endosome-to-Golgi

transport and biosynthetic transport to late endosomes and lysosomes indicative for a regulation of retromer complex-mediated retrograde transport.

**Cellular Location**

Cytoplasm. Endosome membrane; Peripheral membrane protein. Early endosome. Note=Also associated with endosomal membranes. Localizes to macropinosomes.

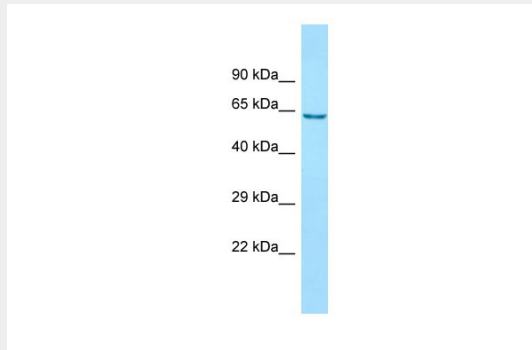
**Tissue Location**

High expression in whole adult brain and intermediate expression in all other tissues and specific brain regions examined, including fetal brain.

**ANKFY1 Antibody - C-terminal region - Protocols**

Provided below are standard protocols that you may find useful for product applications.

- [Western Blot](#)
- [Blocking Peptides](#)
- [Dot Blot](#)
- [Immunohistochemistry](#)
- [Immunofluorescence](#)
- [Immunoprecipitation](#)
- [Flow Cytometry](#)
- [Cell Culture](#)

**ANKFY1 Antibody - C-terminal region - Images**

WB Suggested Anti-ANKFY1 Antibody Titration: 1.0 µg/ml

Positive Control: 721\_B Whole CellANKFY1 is supported by BioGPS gene expression data to be expressed in 721\_B