

**DAND5 Antibody - C-terminal region**  
**Rabbit Polyclonal Antibody**  
**Catalog # AI15393****Specification**

---

**DAND5 Antibody - C-terminal region - Product Information**

Application	WB
Primary Accession	<a href="#">Q8N907</a>
Other Accession	<a href="#">NM_152654</a> , <a href="#">NP_689867</a>
Reactivity	Human
Predicted	Human
Host	Rabbit
Clonality	Polyclonal
Calculated MW	21kDa KDa

**DAND5 Antibody - C-terminal region - Additional Information****Gene ID** 199699**Alias Symbol** CER2, CERL2, CKTSF1B3, COCO, CRL2, DANTE, GREM3, MGC126849, SP1**Other Names**

DAN domain family member 5, Cerberus-like protein 2, Cerl-2, Cysteine knot superfamily 1, BMP antagonist 3, Gremlin-3, DAND5, CER2, CKTSF1B3, GREM3, SP1

**Format**

Liquid. Purified antibody supplied in 1x PBS buffer with 0.09% (w/v) sodium azide and 2% sucrose.

**Reconstitution & Storage**

Add 50 ul of distilled water. Final anti-DAND5 antibody concentration is 1 mg/ml in PBS buffer with 2% sucrose. For longer periods of storage, store at 20°C. Avoid repeat freeze-thaw cycles.

**Precautions**

DAND5 Antibody - C-terminal region is for research use only and not for use in diagnostic or therapeutic procedures.

**DAND5 Antibody - C-terminal region - Protein Information****Name** DAND5**Function**

Antagonist of the extracellular signaling protein NODAL, which is required for correct left-right patterning during embryonic development (By similarity). Antagonist of BMP and TGF-beta signaling (PubMed:<a href="http://www.uniprot.org/citations/33587337" target="\_blank">33587337</a>). Independently of its role in left-right axis establishment, plays a role during heart development, possibly through the regulation of TGF-beta/Nodal signaling pathway (By similarity). Displays anti-angiogenic activity by inhibiting endothelial sprouting, migration, and proliferation. Once internalized by endothelial cells, may alter their redox and

glycolytic balance (PubMed:<a href="http://www.uniprot.org/citations/33587337" target="\_blank">33587337</a>).

#### **Cellular Location**

Secreted. Note=Circulating DAND5 may be uptaken by endothelial cells and transported to mitochondria

#### **Tissue Location**

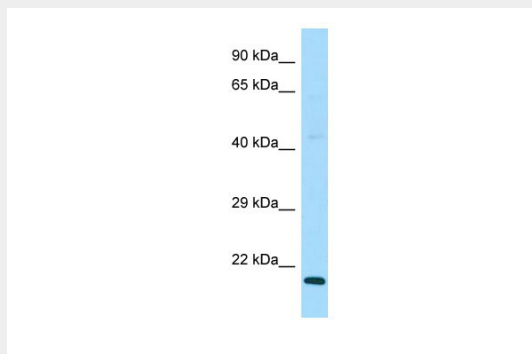
Expressed in the retina, in inner segments of photoreceptors, at or close to the outer plexiform layer and in the ganglion cell layer (at protein level).

### **DAND5 Antibody - C-terminal region - Protocols**

Provided below are standard protocols that you may find useful for product applications.

- [Western Blot](#)
- [Blocking Peptides](#)
- [Dot Blot](#)
- [Immunohistochemistry](#)
- [Immunofluorescence](#)
- [Immunoprecipitation](#)
- [Flow Cytometry](#)
- [Cell Culture](#)

### **DAND5 Antibody - C-terminal region - Images**



WB Suggested Anti-DAND5 Antibody Titration: 1.0 µg/ml

Positive Control: MCF7 Whole Cell

### **DAND5 Antibody - C-terminal region - References**

Itoh N.,et al.Submitted (AUG-2001) to the EMBL/GenBank/DDBJ databases.

Ota T.,et al.Nat. Genet. 36:40-45(2004).

Katoh M.,et al.Oncol. Rep. 12:423-427(2004).