

LY6G6D Antibody - N-terminal region
Rabbit Polyclonal Antibody
Catalog # AI15400**Specification**

LY6G6D Antibody - N-terminal region - Product Information

Application	WB
Primary Accession	O95868
Other Accession	NM_021246 , NP_067069
Reactivity	Human
Predicted	Human
Host	Rabbit
Clonality	Polyclonal
Calculated MW	15kDa KDa

LY6G6D Antibody - N-terminal region - Additional Information**Gene ID** 58530**Alias Symbol** **C6orf23, G6D, LY6-D, MEGT1, MGC150334, NG25****Other Names**

Lymphocyte antigen 6 complex locus protein G6d, Protein Ly6-D, Megakaryocyte-enhanced gene transcript 1 protein, LY6G6D, C6orf23, G6D, MEGT1, NG25

Format

Liquid. Purified antibody supplied in 1x PBS buffer with 0.09% (w/v) sodium azide and 2% sucrose.

Reconstitution & Storage

Add 50 ul of distilled water. Final anti-LY6G6D antibody concentration is 1 mg/ml in PBS buffer with 2% sucrose. For longer periods of storage, store at 20°C. Avoid repeat freeze-thaw cycles.

Precautions

LY6G6D Antibody - N-terminal region is for research use only and not for use in diagnostic or therapeutic procedures.

LY6G6D Antibody - N-terminal region - Protein Information**Name** LY6G6D**Synonyms** C6orf23, G6D, MEGT1, NG25**Cellular Location**

Cell membrane; Lipid-anchor, GPI-anchor. Cell projection, filopodium

Tissue Location

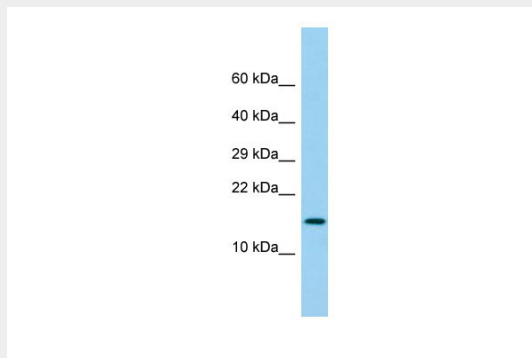
Expressed in the adult lung, and in fetal liver, lung, kidney, brain and spleen.

LY6G6D Antibody - N-terminal region - Protocols

Provided below are standard protocols that you may find useful for product applications.

- [Western Blot](#)
- [Blocking Peptides](#)
- [Dot Blot](#)
- [Immunohistochemistry](#)
- [Immunofluorescence](#)
- [Immunoprecipitation](#)
- [Flow Cytometry](#)
- [Cell Culture](#)

LY6G6D Antibody - N-terminal region - Images



Host: Rabbit
Target Name: LY6G6D
Sample Tissue: Fetal Lung lysates
Antibody Dilution: 1.0 μ g/ml

LY6G6D Antibody - N-terminal region - References

Mallya M., et al. *Genomics* 80:113-123(2002).
Ribas G., et al. *J. Immunol.* 163:278-287(1999).
Xie T., et al. *Genome Res.* 13:2621-2636(2003).
Shiina S., et al. Submitted (DEC-2004) to the EMBL/GenBank/DDBJ databases.
Mungall A.J., et al. *Nature* 425:805-811(2003).