

THOP1 Antibody - C-terminal region
Rabbit Polyclonal Antibody
Catalog # AI15467**Specification**

THOP1 Antibody - C-terminal region - Product Information

Application	WB
Primary Accession	P52888
Other Accession	NM_003249 , NP_003240
Reactivity	Human
Predicted	Human
Host	Rabbit
Clonality	Polyclonal
Calculated MW	76kDa KDa

THOP1 Antibody - C-terminal region - Additional Information**Gene ID** 7064**Alias Symbol** **EP24.15, MEPD_HUMAN, MP78, TOP****Other Names**

Thimet oligopeptidase, 3.4.24.15, Endopeptidase 24.15, MP78, THOP1

Format

Liquid. Purified antibody supplied in 1x PBS buffer with 0.09% (w/v) sodium azide and 2% sucrose.

Reconstitution & Storage

Add 50 ul of distilled water. Final anti-THOP1 antibody concentration is 1 mg/ml in PBS buffer with 2% sucrose. For longer periods of storage, store at 20°C. Avoid repeat freeze-thaw cycles.

Precautions

THOP1 Antibody - C-terminal region is for research use only and not for use in diagnostic or therapeutic procedures.

THOP1 Antibody - C-terminal region - Protein Information**Name** THOP1**Function**Involved in the metabolism of neuropeptides under 20 amino acid residues long. Involved in cytoplasmic peptide degradation (PubMed: [17251185](http://www.uniprot.org/citations/17251185), PubMed: [7639763](http://www.uniprot.org/citations/7639763)). Able to degrade the amyloid-beta precursor protein and generate amyloidogenic fragments (PubMed: [17251185](http://www.uniprot.org/citations/17251185), PubMed: [7639763](http://www.uniprot.org/citations/7639763)). Also acts as a regulator of cannabinoid signaling pathway by mediating degradation of hemopressin, an antagonist peptide of the cannabinoid receptor CNR1 (By similarity).

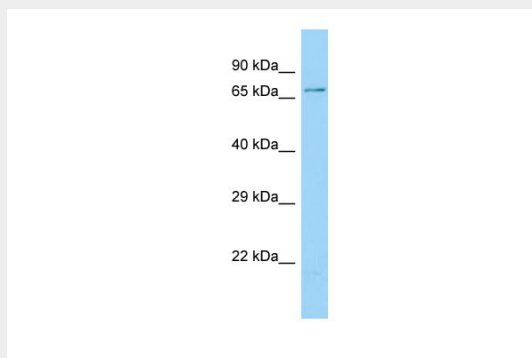
Cellular Location

Cytoplasm {ECO:0000250|UniProtKB:P47788}.

THOP1 Antibody - C-terminal region - Protocols

Provided below are standard protocols that you may find useful for product applications.

- [Western Blot](#)
- [Blocking Peptides](#)
- [Dot Blot](#)
- [Immunohistochemistry](#)
- [Immunofluorescence](#)
- [Immunoprecipitation](#)
- [Flow Cytometry](#)
- [Cell Culture](#)

THOP1 Antibody - C-terminal region - Images

Host: Rabbit

Target Name: THOP1

Sample Tissue: HeLa Whole cell lysate

s

Antibody Dilution: 1.0µg/ml THOP1 is supported by BioGPS gene expression data to be expressed in HeLa

THOP1 Antibody - C-terminal region - References

Thompson A., et al. *Biochem. Biophys. Res. Commun.* 213:66-73(1995).

Taylor G.R., et al. Submitted (DEC-1995) to the EMBL/GenBank/DDBJ databases.

Ota T., et al. *Nat. Genet.* 36:40-45(2004).

Grimwood J., et al. *Nature* 428:529-535(2004).

Papastoitis G., et al. *Biochemistry* 33:192-199(1994).